

**Wind Ensemble / Symphonic Winds / USC Symphony
Auditions**

Audition Notes for Tuba

Audition Date: Thursday August 23

Be ready to perform your audition in the following order.

Scale Study: Arban Pattern No. 2

You will play this scale pattern in one major key. The key will be selected for you at random at the audition. When two octaves are provided you may choose the one you prefer. This will be the first thing you will play, so make a good first impression.

Excerpts

Grainger: *Lincolnshire Posy*; Movement 3 “Rufford Park Poachers”

Version A – Measures 45 to the downbeat of measure 64

Elgar: *Enigma Variations*

Movement VII – Rehearsal 25, play for seven measures

– Rehearsal 48 to Rehearsal 49

Movement VII – Rehearsal 50 to the end of movement

(count the 4 measures rest)

Movement XIV – Rehearsal 62 to second measure after 64

– Rehearsal 68 through Rehearsal 70

Sight Reading

Tuba

Scale Pattern No. 2

J. B. Arban

C Major

Measures 1-16 of the C Major scale pattern. The notation is in bass clef with a 2/4 time signature. It consists of eighth-note runs and quarter notes with rests. Measure numbers 9 and 17 are indicated at the start of their respective lines.

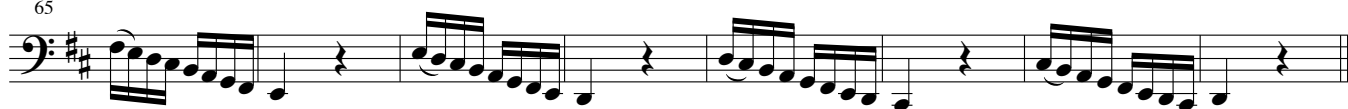
G Major

Measures 17-40 of the G Major scale pattern. The key signature has one sharp (F#). The notation continues with eighth-note runs and quarter notes with rests. Measure numbers 25, 33, and 41 are indicated at the start of their respective lines.

D Major

Measures 41-56 of the D Major scale pattern. The key signature has two sharps (F# and C#). The notation continues with eighth-note runs and quarter notes with rests. Measure numbers 49 and 57 are indicated at the start of their respective lines.

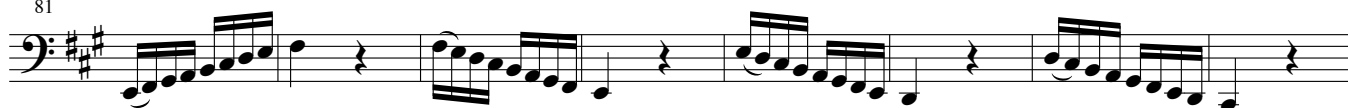
65



73 A Major



81



89



97 E Major



105



113



121 B Major



129



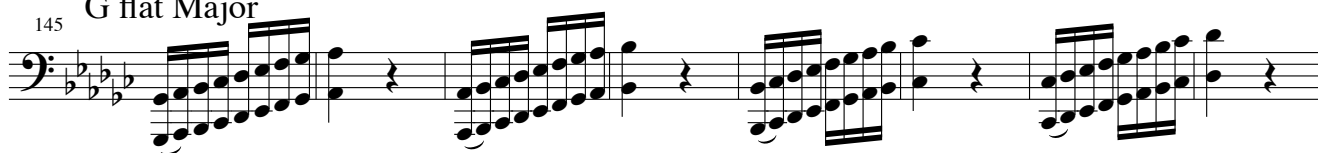
137



Scale Pattern No. 2, Tuba, page 3

G flat Major

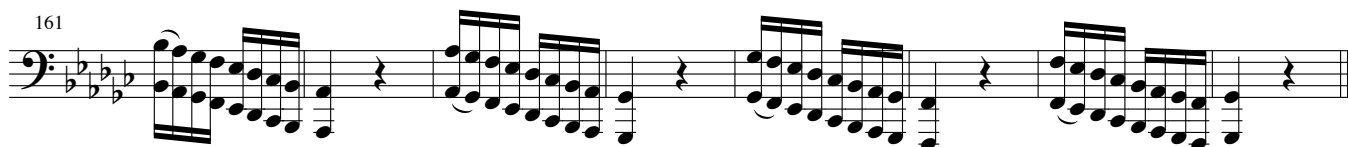
145



153



161



D flat Major

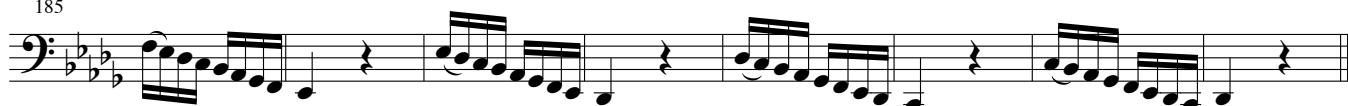
169



177



185



A flat Major

193



201

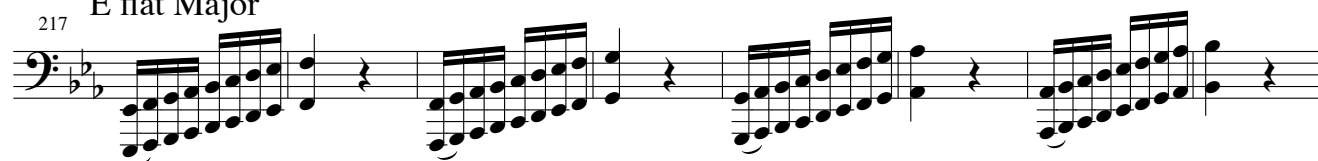


209

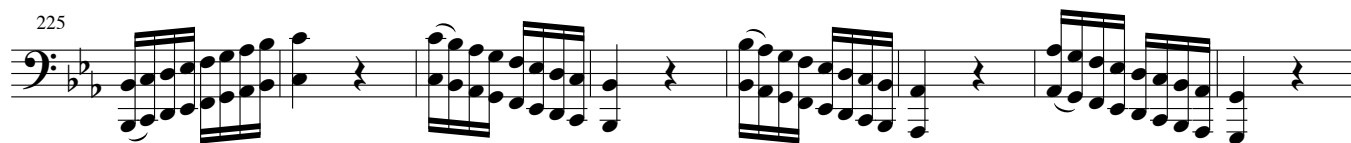


E flat Major

217



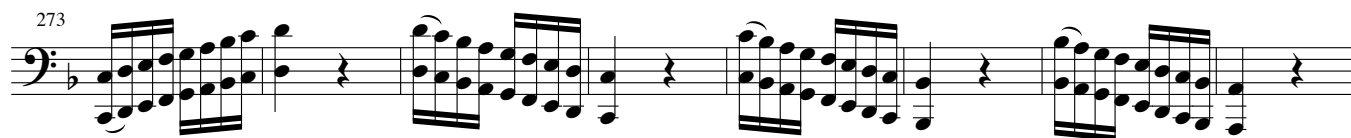
Scale Pattern No. 2, Tuba, page 4



241 B flat Major



265 F Major



3

Faster

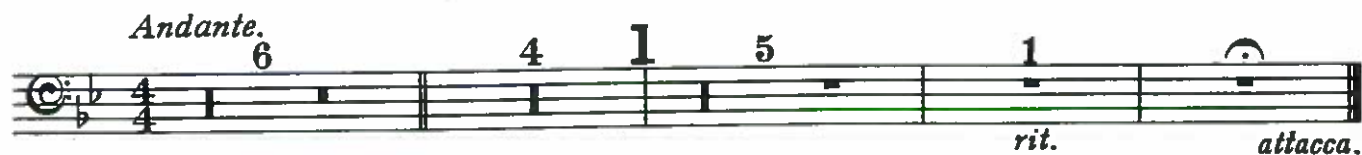
46150

VARIATIONS

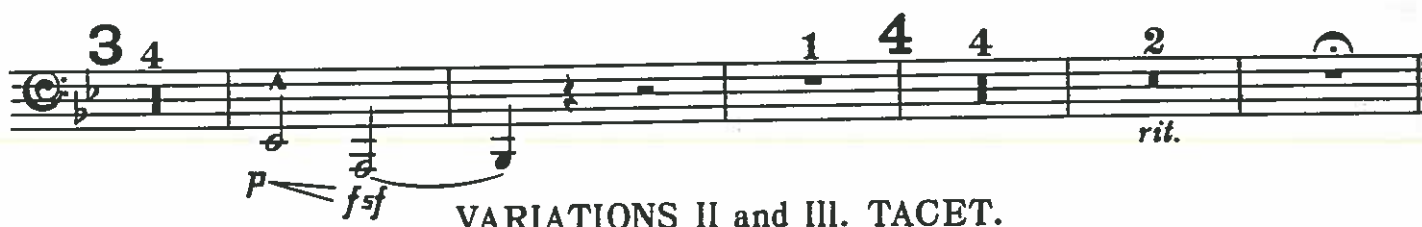
Composed by
EDWARD ELGAR, Op.36.

TUBA.

Enigma.

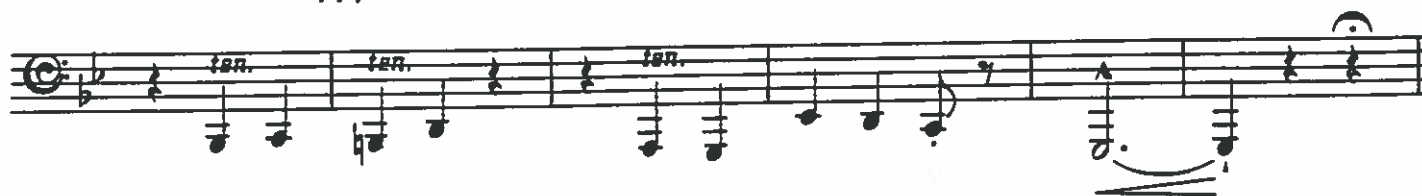


I. (C. A. E.)



VARIATIONS II and III. TACET.

IV. (W. M. B.)



EDWIN F. KALMUS
PUBLISHER OF MUSIC
New York, N. Y.

VII.

(Troyte.)

TUBA.

23 *Presto.*
Timp.



VIII.

(W. N.)

30 *Allegretto.*



31 10 32 7 1

rit. attacca.

IX.

(Nimrod.)

TUBA.

33 *Adagio.* VI.I. 6 34 11 35 4 VI.I.

ppp p

36 *legatissimo* mf f p f

37 *rit.* 1 p cresc. rf molto cresc. ff pp

X.

(Dorabella.)

38 *Allegretto.* 9 39 10 40 7 41 11 42

5 43 5 44 11 45 8 46 4

XI.

(G. R. S.)

47 *Allegro di molto.* Strings. Fag.

5 Wood. 48 ff sf sf sf sf

49 2 2 C. Fag. 2 50 1 sf sf sf sf

Bassi. Fag. sfp dim. sfp dim.

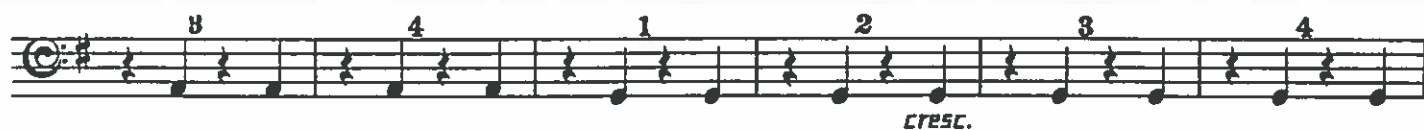
51 4 legato mf cresc.

XIV. (E. D. U.)

TUBA.

Finale.

61 Allegro.



67

sfz *sfz* *sfz* *cresc.*

1 2 3 4

68 *Grandioso*

ff *simile* *ff* *simile*

1 2 3 4

69

ff *fff* *stringendo*

1 2 3 4

70 *TEMPO I^o*

ffz *pp*

1 2 3 4

71 *largamente* *a tempo* Bass Tromb.

ff *sf*

1 2 3 4

72 73 8 Bass Tromb

sf *pp*

1 2 3 4

74 *Animando* 10 75

pppp *pp*

1 2 3 4

76

cresc. *ff*

1 2 3 4

Bass Tromb. *accel. poco a poco*

p

1 2 3 4

