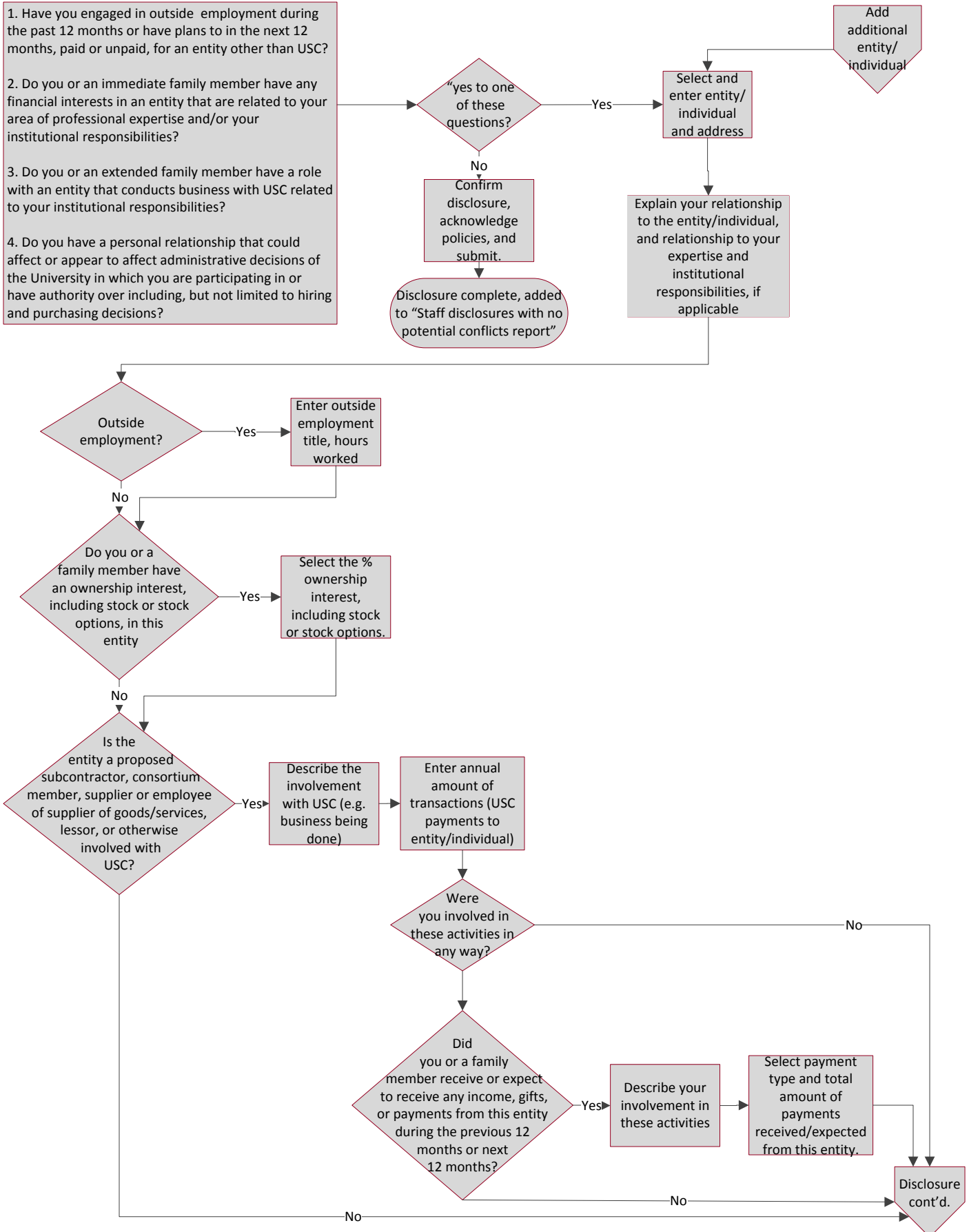
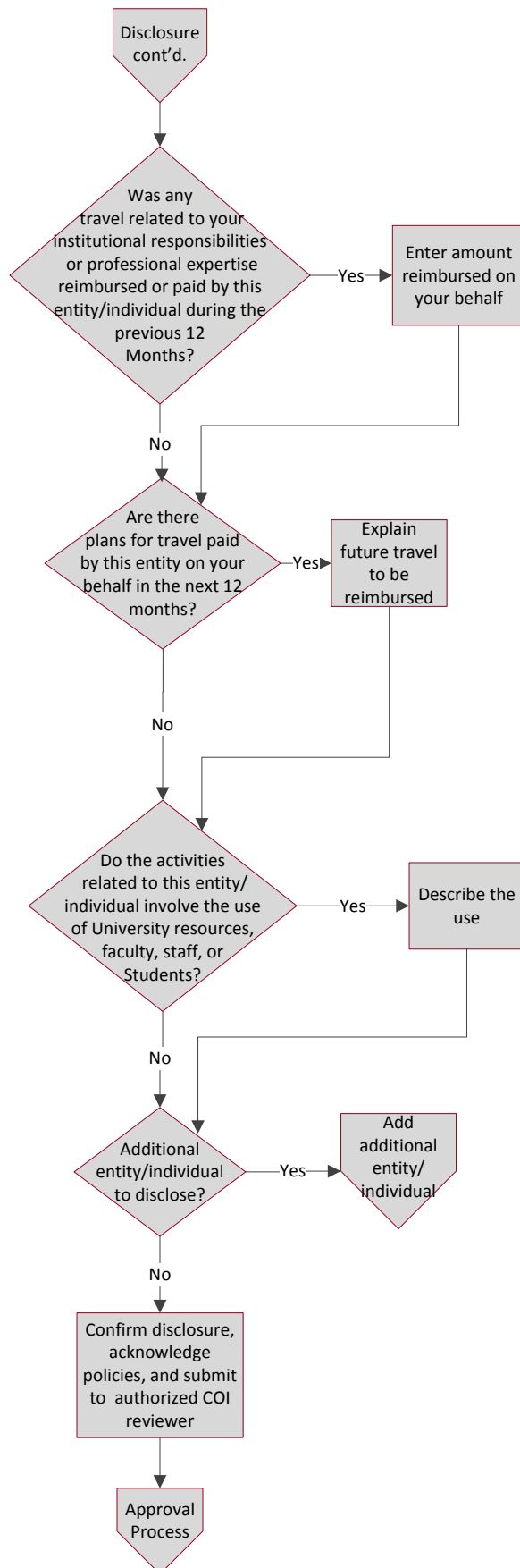


University of South Carolina Staff Conflict of Interest and Outside Employment Disclosure Internal Control Map

1. Have you engaged in outside employment during the past 12 months or have plans to in the next 12 months, paid or unpaid, for an entity other than USC?
2. Do you or an immediate family member have any financial interests in an entity that are related to your area of professional expertise and/or your institutional responsibilities?
3. Do you or an extended family member have a role with an entity that conducts business with USC related to your institutional responsibilities?
4. Do you have a personal relationship that could affect or appear to affect administrative decisions of the University in which you are participating in or have authority over including, but not limited to hiring and purchasing decisions?



University of South Carolina Staff Conflict of Interest and Outside Employment Disclosure Internal Control Map



University of South Carolina Staff Conflict of Interest and Outside Employment Disclosure Internal Control Map

