

Wind Ensemble / Symphonic Winds Auditions

Audition Notes for Tuba

Audition Date: Wednesday August 19, 2020; 7:00-8:30PM

Be ready to perform your audition in the following order.

Scale Study (Arban Pattern No. 2)

You will play this pattern in one major key that will be selected for you at random at the audition. You may play it at whatever tempo you choose, but once you establish it, stay committed to it. This will be the first thing you will play, so be sure it makes a good first impression.

Melodic Study of Your Choice (30 seconds)

Excerpt

James Barnes

Symphony No. 3; Movement I - Lento

One measure before rehearsal 1 through the 4th measure of rehearsal 3

Sight Reading

Tuba

Scale Pattern No. 2

J. B. Arban

C Major

Measures 1-16 of the C Major scale pattern. The notation is in bass clef with a 2/4 time signature. It consists of eighth-note runs and quarter notes with rests. Measure numbers 9 and 17 are indicated at the start of their respective lines.

G Major

Measures 17-40 of the G Major scale pattern. The key signature has one sharp (F#). The notation continues with eighth-note runs and quarter notes with rests. Measure numbers 25, 33, and 41 are indicated at the start of their respective lines.

D Major

Measures 41-56 of the D Major scale pattern. The key signature has two sharps (F# and C#). The notation continues with eighth-note runs and quarter notes with rests. Measure numbers 49 and 57 are indicated at the start of their respective lines.

Scale Pattern No. 2, Tuba, page 2

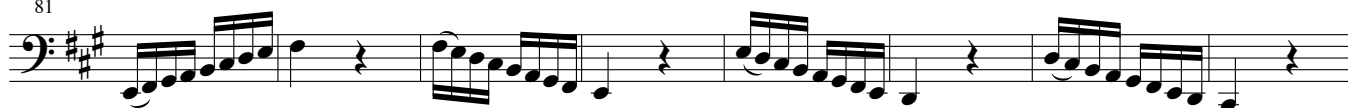
65



73 A Major



81



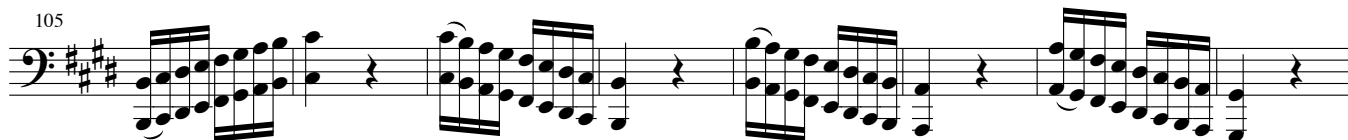
89



97 E Major



105



113



121 B Major



129



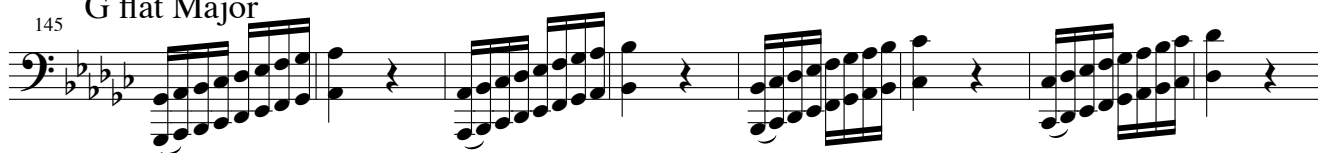
137



Scale Pattern No. 2, Tuba, page 3

G flat Major

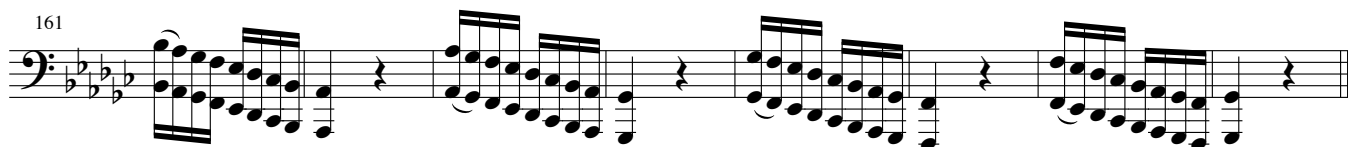
145



153



161



D flat Major

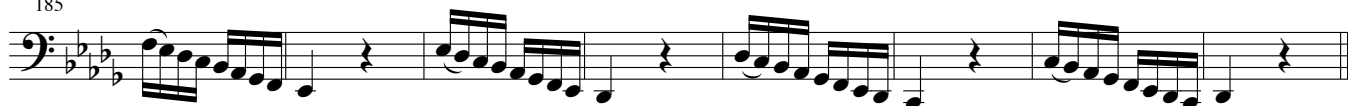
169



177



185

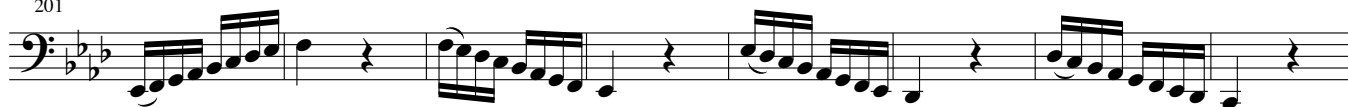


A flat Major

193



201



209

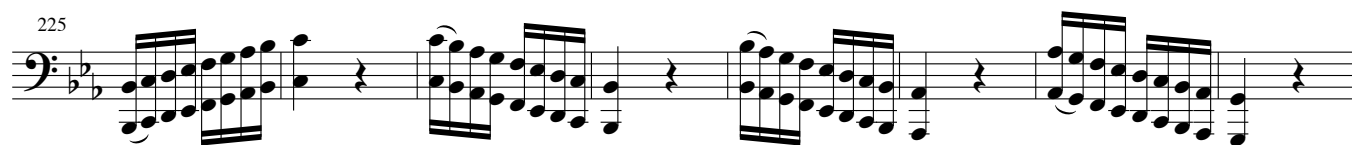


E flat Major

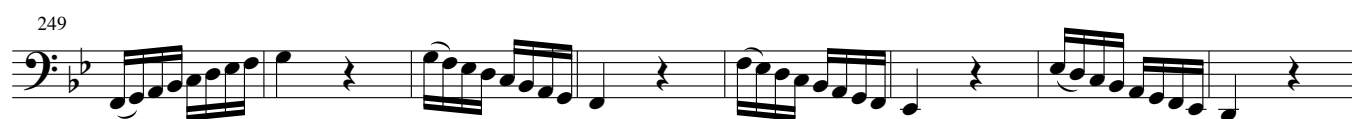
217



Scale Pattern No. 2, Tuba, page 4



241 B flat Major



265 F Major



Tuba

Third Symphony

I. Lento

James Barnes
op. 89

Lento (♩ = 66)
3

1. solo

1

mp doloroso

9 *mf*

mp cresc.

14

rall.

18 *f* *dim.*

2 *a tempo*

24 *p* *mf* *p*

rall.

3 *a tempo*

29 *mf* *p* *mf*

11 4 8 5 8 6 12 7 6

35

(BASSOON) (CLAR)

tutti *f*

rall.

8 *a tempo*

81 *ff*