

GMaP Region 1 North Welcome Packet

Table of Contents

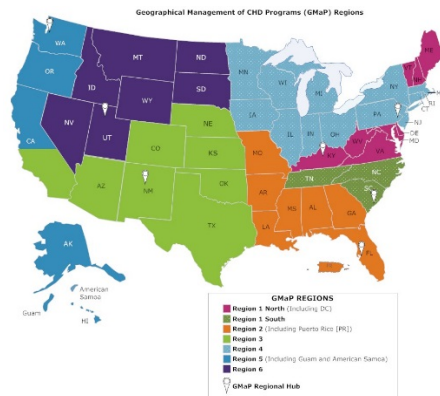


Table of Contents

GMaP Region 1 North Member Welcome Letter	2-3
National Cancer Institute (NCI) Center to Reduce Cancer Health Disparities (CRCHD) Fact Sheet	4
NCI CRCHD Geographical Management of Cancer Health Disparities Program (GMAP) Overview	5-6
How Can GMAP Help You? GMAP Hubs	7
Get Involved with GMAP Contact your Regional Coordinating Director	8
GMAP Region 1 North (R1N) Specific Aims	9
GMAP R1 North Web and Social Media Presence	10
Continuing Umbrella of Research Experiences (CURE) Overview & Opportunities	1 1
GMAP R1N Organization Chart	13
Advisory Committee Roster	14-17
Diversity Training Subcommittee	18
Education and Outreach Subcommittee	19
Regional Coordinating Director Profiles	20
National Outreach Network (NON) Fact Sheet	21-22
NON Community Health Educators (CHEs) Roster	23



Dear New Member,

Welcome to GMaP Region 1 North. We are writing to invite you to participate in the NCI/CRCHD supported region-based Geographic Management of Cancer Health Disparities Program (GMaP). Your region, GMaP Region 1 North, includes Delaware, Kentucky, Maryland, Maine, New Hampshire, Virginia, Vermont, West Virginia, and the District of Columbia. Our mission is to increase collaborate efforts to reduce cancer health disparities within our region and between the national GMaP regions.

Utilizing a geographic region based approach to addressing cancer health disparities, GMaP encourages teams of disparities researchers, Continuing Umbrella of Research Experience (CURE) Scholars and National Outreach Network (NON) Community Health Educators (CHEs) to work together to reduce the unequal burden of cancer in at-risk and underserved communities.

What is GMaP?

GMaP employs a systematic and comprehensive strategy for building region-based “hubs or networks” for the support and efficient management of cancer and cancer health disparities (CHD) research, training, and infrastructure. Its goals are to advance the science of cancer health disparities, contribute to the next generation of CHD researchers, and ultimately, to achieve measurable reductions in cancer and cancer health disparities in each of six regions.

Additional information on GMaP and Region 1 North in this [Welcome Packet](#) prepared by your Regional Coordinating Directors.

Why join GMaP?

GMaP offers a central support system for you – within the geographic location in which you are pursuing your academic and/or professional pursuits – to receive information about targeted research and training opportunities, and other relevant news about cancer health disparities research in your region.

What does GMaP offer researchers and CURE scholars?

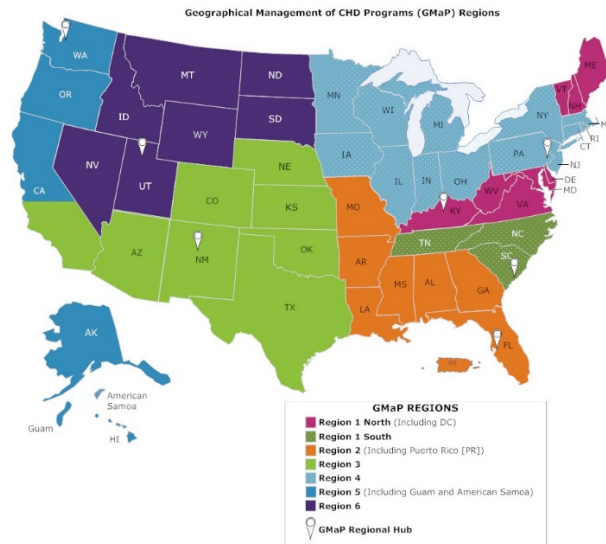
- Professional development and mentorship opportunities
- Collaboration and interaction opportunities in cancer and cancer health disparities (CHD) research
- Increased access to shared state-of-the-art cancer resources, tools, and information
- Monthly electronic communications with new training/funding opportunities and job opportunities



**CONTINUING UMBRELLA OF
RESEARCH EXPERIENCES**

About GMaP

Currently, there are seven GMaP hubs (or regions) throughout the U.S. The seven GMaP regions are depicted in the map below. The tickers indicate the headquarters location of each GMaP region. Your (Region 1N) has three Regional Coordinating Directors who can assist you in communicating, connecting and interacting with other researchers, trainees, community partners, and NCI CRCHD program staff.



How do I become a member of the GMaP Network?

Your GMaP Regional Coordinating Directors will be contacting you shortly to introduce themselves and invite you to provide them with your information about your background and research interests. Your information will better help your GMaP Regional Coordinator match your expertise/interests with various training and career development opportunities offered within your region.

You can also expect to start receiving regular GMaP newsletters and email updates from your GMaP regional coordinators with useful research and training related resources, tools and information to use and share.

We look forward to welcoming you into the GMaP regional network family!

Best regards,

The NCI/CRCHD GMaP Team & Your R1N Regional Coordinating Directors.

Marcela Blinka, MSW (RCD1)	Julia Houston, MSW (RCD2)	Mark Cromo (RCD3)
mblinka1@jhmi.edu	houstojf@mailbox.sc.edu	mark.cromo@uky.edu

OVERVIEW

Since 2001, the Center to Reduce Cancer Health Disparities (CRCHD) has served as the cornerstone of NCI's efforts to reduce the unequal burden of cancer in our nation.

MISSION

To reduce cancer health disparities, CRCHD seeks to:

- Stimulate research that identifies biological and non-biological determinants of cancer health disparities and validates interventions to reduce the disparities.
- Achieve diversity in training researchers who conduct cancer and cancer health disparities research.
- Promote multidisciplinary, multisite integrative science teams, which engage communities, in order to build capacity, leverage resources/strengths, and foster synergy between research, training, and outreach for cancer disparities reduction.

PROGRAMS**Continuing Umbrella of Research Experiences (CURE)**

Launched in 1997, CURE is a national research training and career development initiative that focuses on building and sustaining a pipeline of diverse cancer investigators. Starting with high school students and extending to newly awarded, independent cancer researchers, CURE trains individuals who come from groups that have been shown to be underrepresented in biomedical science and cancer research.

CURE is the first and only NIH program to offer long-term support to qualified, underrepresented students and professionals who are otherwise at risk of being lost from the training pipeline.

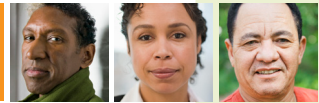


NCI defines cancer health disparities as "differences in the incidence, prevalence, mortality, and burden of cancer and related adverse health conditions that exist among specific population groups in the United States."

Health disparities can occur due to the inequities experienced by racial and ethnic populations, and by marginalized groups such as the poor, rural, and aging populations.

The field of cancer health disparities is complex and affected by a multitude of health, biological, environmental, and social factors. To advance understanding of the multifactorial causes of cancer disparities, including biological and non-biological bases of cancer incidence and progression, networking programs facilitate new and ongoing linkages between research, training, and outreach.

Center to Reduce Cancer Health Disparities



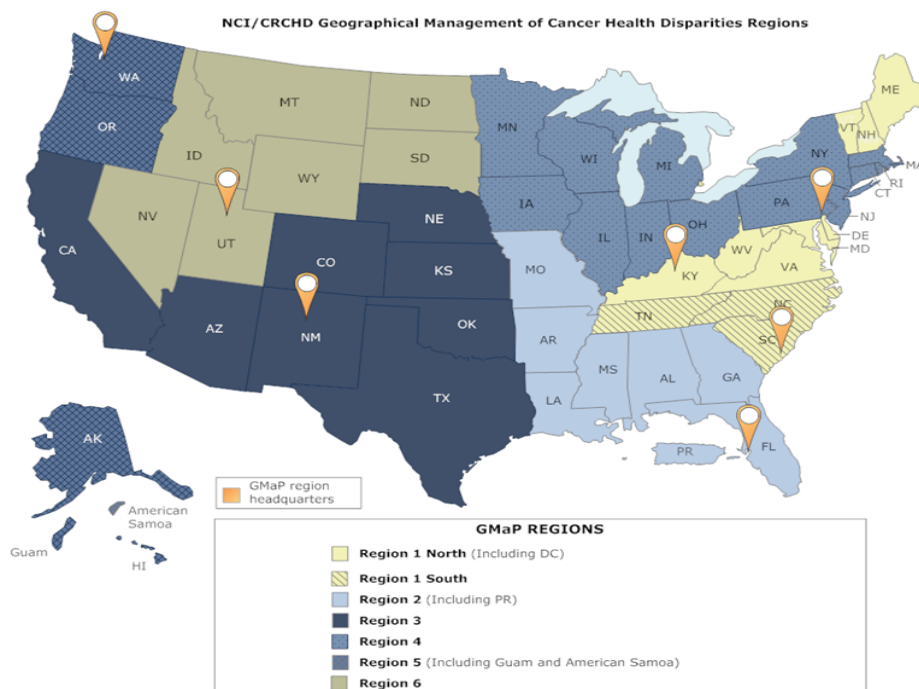
WHERE WE WORK

Current GMaP Locations

Housed at leading NCI-Designated Cancer Centers, regional GMaP networks provide the infrastructure and technical expertise to foster state-of-the-science cancer research and training for diverse scientists at partnering institutions, among which are some of the leading cancer research centers in the country.

Future Expansion

Regional GMaP networks are working to partner with more cancer research centers and NCI and NIH flagship programs housed at numerous institutions within and across the regions.



Scan this QR code with your mobile device to access GMaP information online.

Regional Hubs

Region 1 North
Markey Cancer Center

Region 1 South
Hollings Cancer Center

Region 2
Moffitt Cancer Center

Region 3
UNM Cancer Center

Region 4
Fox Chase Cancer Center

Region 5
Fred Hutchinson Cancer Research Center

Region 6
Huntsman Cancer Institute

JOIN THE TEAM

Benefits of GMaP Collaboration

- Collaborative cancer and cancer health disparities research studies
- Increased partnerships and faculty participation in research
- Enhancements to diversity training, including smoother transitioning of students/trainees in cancer and cancer health disparities research
- Increased access to shared resources, tools, and cancer information
- Better strategies of community engagement by all partners
- Improved participation in clinical trials and biospecimen efforts
- Expanded capacity to address the gaps in cancer disparities research specific to each community

Get Involved

Identify and contact the GMaP Regional Coordinating Director (RCD) for your region at <http://crchd.cancer.gov>.

For more information, please contact the following Program Directors or visit the webpage listed below.

Anil Wali, PhD
walia@mail.nih.gov

Liz Perruccio, PhD
liz.perruccio@nih.gov

**Center to Reduce
Cancer Health Disparities**
9609 Medical Center Drive
MSC 9746
Sixth Floor, West Tower
Bethesda, MD 20892
Phone: 240-276-6170
Fax: 240-276-7862
CRCHD.CANCER.GOV

Center to Reduce Cancer Health Disparities

GEOGRAPHICAL MANAGEMENT OF CANCER HEALTH DISPARITIES PROGRAM (GMaP)

GMaP Overview

The Geographic Management of Cancer Health Disparities Program (GMaP), initiated in 2009, is a national program of regional, disparities-based hubs or networks for cancer health disparities research, diversity training, and community education/outreach.

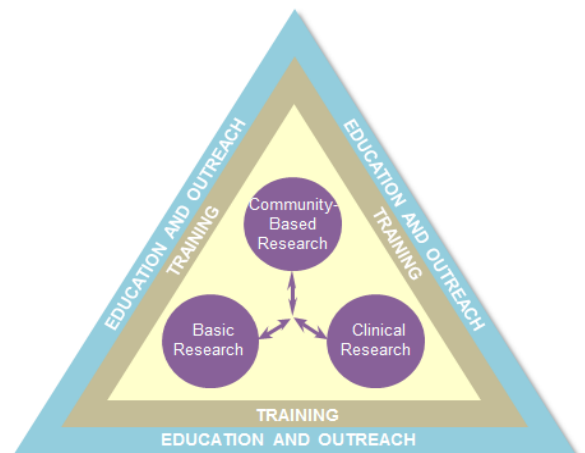
Employing a systematic and comprehensive geographic-based strategy, GMaP is unique in bringing together investigators/researchers, particularly those working in cancer health disparities and underrepresented investigators, underrepresented trainees, community health educators, and community members to work together to share information, resources, and tools; enhance access to underrepresented investigators and trainees to career and professional development opportunities; and strengthen region-based community education and outreach efforts that contribute to achieving GMaP goals.

GMaP Goals

The goals of GMaP are to contribute to the science of cancer and cancer health disparities and advance the next generation of competitive, underrepresented cancer and cancer health disparities investigators.

GMaP Objectives

- Create opportunities for scientific exchange, cooperation, and collaboration among cancer and cancer health disparities researchers.
- Attract underrepresented students, trainees/scholars, and investigators to the biomedical cancer enterprise.
- Enhance access of underrepresented students, trainees and scholars to career development and mentoring opportunities.
- Increase cancer information dissemination and best practice sharing among researchers and trainees/scholars.
- Build strong relationships with NON community health educators (CHEs).



GMaP is a regional strategy to build critical “hubs” for support and efficient management of cancer health disparities research, training, and education/outreach programs.

The Geographic Management of Cancer Health Disparities Program

The Geographic Management of Cancer Health Disparities Program (GMaP)—consisting of 7 regions and engaging more than 1,200 disparities researchers, diversity trainees, and community health educators—employs a systematic and comprehensive strategy for building region-based “hubs” or networks for the support and efficient management of cancer and cancer health disparities (CHD) research, training, and infrastructure.

How Can GMaP Help You?

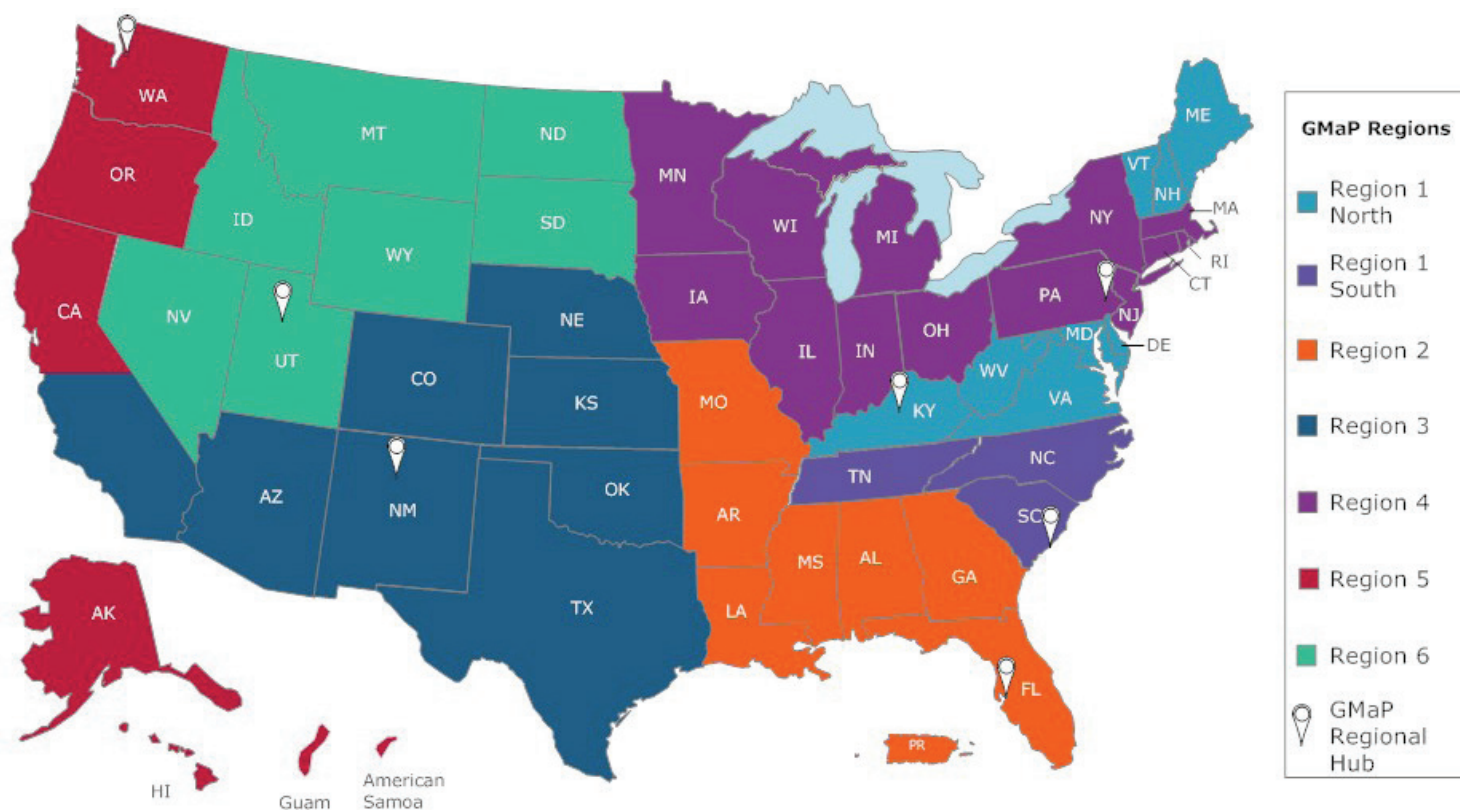
Fostering cooperation and collaboration among researchers, students and trainees, and community health educators, GMaP seeks to contribute to the science of cancer and CHD research, promote the development of the next generation of competitive, underrepresented cancer and CHD investigators, and enhance access to cancer information and research among underserved communities.

GMaP provides you with enhanced access to career development resources, such as:

- Informational Webinars on Funding Opportunities
- Job Openings
- Networking Opportunities
- Mentoring Connections
- Updates from NCI and NIH
- Access to Scientific Resources
- Grant Writing Workshops
- Cancer and Cancer Health Disparities Resources and Tools
- Training Navigation

Where is GMaP?

There are seven regional hubs housed at NCI-Designated Cancer Centers across the United States.



Get Involved!

Contact the Regional Coordinating Director in your region or visit your local GMaP website to find out how GMaP can help you.

1N

Markey Cancer Center – DE, KY, MD, ME, NH, VT, VA, WV, DC

<http://gmapr1.com>

Julia Houston | HOUSTOJF@mailbox.sc.edu

Marcela Blinka | mblinka1@jhmi.edu

Mark Cromo | mark.cromo@uky.edu

1S

Hollings Cancer Center – TN, NC, SC

www.hollingscancercenter.org/about-hollings/commitments/GMaP/index.html

LaShanta J. Rice | ricela@musc.edu

Anissa I. Vines | avines@email.unc.edu

2

Moffitt Cancer Center & Research Institute – AL, AR, FL, GA, LA, MO, MS, PR

<https://moffitt.org/research-science/partnerships/community/gmap/>

Kimberly Williams | Kimberly.Williams@moffitt.org

3

University of New Mexico Cancer Center – AZ, CA, CO, KS, NE, NM, OK, TX

<http://cancer.unm.edu/gmap-region3/>

Miria Kano | MKano@salud.unm.edu

4

Fox Chase Cancer Center – CT, IA, IL, IN, MA, MI, MN, NJ, NY, OH, PA, RI, WI

<http://www.cdrn.org/>

Linda Fleisher | FleisherL@email.chop.edu

Carrie Norbeck | Carrie.Norbeck@fccc.edu

5

Fred Hutchinson Cancer Research Center – AK, CA, HI, OR, WA, American Samoa, Guam

www.fredhutch.org/en/labs/science-projects/GMap.html

Heidi Tham | hharbach@fhcrc.org

6

Huntsman Cancer Institute – ID, MT, NV, ND, SD, UT, WY

<http://healthcare.utah.edu/huntsmancancerinstitute/research/cancer-health-equity/gmap/>

Anna Reineke | Anna.Reineke@hci.utah.edu

For general information about GMaP, contact an NCI/CRCHD Program Director.

Natasha A. Brown | natasha.brown2@nih.gov

Liz Perruccio | liz.perruccio@nih.gov

Anil Wali | walia@mail.nih.gov

www.cancer.gov/about-nci/organization/crchd/inp/gmap

<http://crchd.cancer.gov> | [@ncicrhd](https://twitter.com/ncicrhd)

The overall goal of this project is to advance our mission of addressing the problems of cancer health disparities in our region by building on infrastructure that has been developed over the last five years.

Efforts to address cancer-related health disparities require collaborative, interdisciplinary activities across a wide range of organizations, each having their own strengths and approaches. We are uniquely positioned to make a significant impact due to our long history with GMaP, our multi-institution approach, our longstanding partnerships, and the ability to maintain and enhance our existing committees rather than start as a new program. To reach the goal of addressing cancer health disparities in the region, the following aims are proposed:

1. Increase opportunities within the GMaP Region 1 catchment area to attract underrepresented trainees/students and investigators to the biomedical cancer enterprise.
2. Enhance access to underserved communities for NCI and other programs within the region to engage communities in research via NCI National Outreach Network (NON) Community Health Educators (CHE) and community organizations.
3. Increase disparities-related information dissemination and resource/best practice sharing within the region to promote resource efficiencies.
4. Increase the number of grant applications in cancer health disparities throughout the region.
5. Enhance access of underrepresented investigators and trainees located within the region to career development and mentoring opportunities.
6. Continuously assess progress toward reaching the project goal.

To achieve these aims, we will utilize a unique Regional Coordinating Director (RCD) structure and a previously developed and successful organizational structure to maintain our momentum in striving towards our aims. By continuing the activities of our existing committees and workgroup, we will have the infrastructure to advance our overall mission of minimizing cancer health disparities and improve the health of the populations we serve.

For quick access to GMAP R1 North Web and Social Media platforms, use this cheat sheet. Also refer to additional tutorials provided to you as part of communications campaigns launched by RCDs.



<http://www.gmapr1.com/>



<https://www.facebook.com/R1NGMaP/>



<https://plus.google.com/u/0/+GMAPRegion1North>



<https://www.linkedin.com/groups/7466967>



<https://twitter.com/GMaPR1N>



<https://www.youtube.com/channel/UC8zdFVxuxYgNuzE3Sgd7KkA>



https://www.google.com/calendar/embed?height=600&wkst=1&bgcolor=%23FFFFFF&src=63bmg2sd5l5hi1u85n8fvgo6p4%40group.calendar.google.com&color=%232952A3&ctz=America%2FNew_York

Any information that Network partners want shared should be sent to cpcpusc@gmail.com with URLs, links and/or files. Until GMAP R1 North members join Google+ and learn sharing via Circle, RCs will have to facilitate information sharing in the interim.

Continuing Umbrella of Research Experiences

CURE Overview

Continuing Umbrella of Research Experiences (CURE) is a national research-training and career-development initiative that focuses on building and sustaining a pipeline of diverse cancer investigators.

CURE provides training opportunities for underrepresented students and trainees across the academic continuum in order to diversify the workforce in cancer and cancer health disparities research.



CURE supports you through all stages of your education and career—beginning in high school—ensuring that you have the skills you need to become a successful investigator.



Training and Career Development Funding Opportunities

The CURE program offers students, postdoctoral trainees, and early-stage investigators training and career development funding opportunities using research supplements, predoctoral fellowships, and career development awards. You may be eligible if you are a student or investigator from an underrepresented racial or ethnic group, have a disability, or come from a disadvantaged background. Additional eligibility information is described in the funding announcements.

Learn More

You are encouraged to contact a CRCHD program director before applying for funding.

Davyd W. Chung, Ph.D. (R25)
davyd.chung@nih.gov

Alison Lin, Ph.D. (Diversity Supplements)
alison.lin@nih.gov

Nicole McNeil, Ph.D. (F31)
mcneiln@mail.nih.gov

John Ojeifo, M.D., Ph.D. (K08, K23)
ojeifojo@mail.nih.gov

Elena Schwartz, Ph.D. (Diversity Supplements)
elena.schwartz@nih.gov

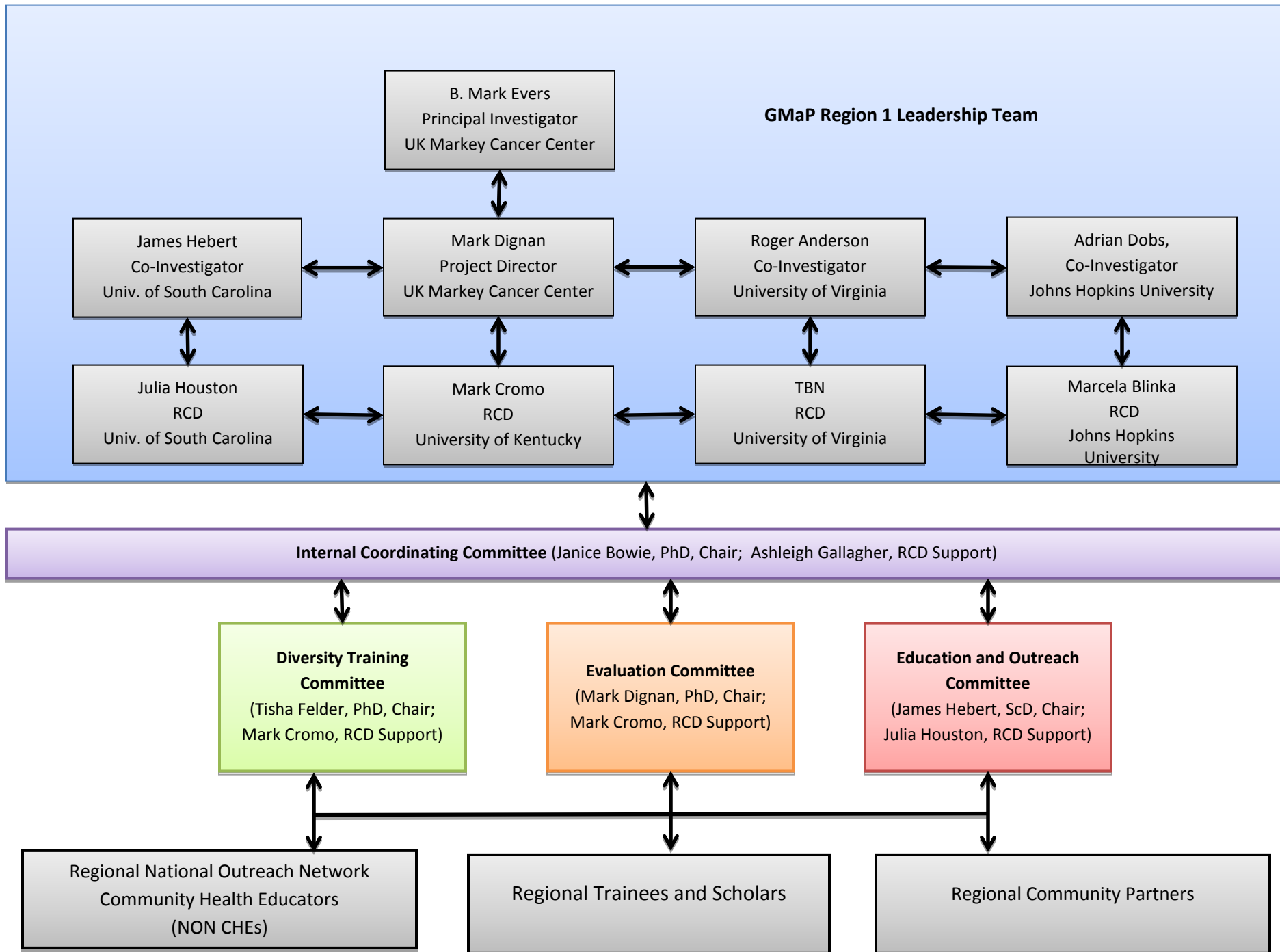
Abigail Soyombo, Ph.D. (K01, K22, R21)
abigail.soyombo@nih.gov

For more information about CURE, visit:

www.cancer.gov/about-nci/organization/crchd/diversity-training/cure

CURE Funding Opportunities

High School and Undergraduate Training	Purpose
PA-16-288 – Research Supplements to Promote Diversity in Health-Related Research	Improve research workforce diversity by supporting individuals from groups that are underrepresented in cancer and cancer health disparities research.
Predoctoral and Postdoctoral Training	Purpose
PA-16-288 – Research Supplements to Promote Diversity in Health-Related Research	Improve research workforce diversity by supporting individuals from groups that are underrepresented in cancer and cancer health disparities research.
PA-16-308 – Ruth L. Kirschstein National Research Service Awards for Individual Predoctoral Fellowships to Promote Diversity in Health-Related Research (F31)	Enhance the diversity of the health-related research workforce by supporting the research training of predoctoral students from underrepresented groups in biomedical, behavioral, or clinical sciences.
Postdoctoral and Investigator Training	Purpose
PA-16-288 – Research Supplements to Promote Diversity in Health-Related Research	Improve research workforce diversity by supporting individuals from groups that are underrepresented in cancer and cancer health disparities research.
PA-15-321 – Supplements to Promote Re-Entry into Biomedical and Behavioral Research Careers	Help high-potential individuals re-enter an active biomedical and behavioral research career after absence due to family care.
PAR-16-401 – NCI Mentored Research Scientist Development Award to Promote Diversity (K01)	Provide mentored support to individuals with a research or health professional doctoral degree from underrepresented groups in biomedical research.
PAR-16-400 – NCI Mentored Clinical Scientist Research Career Development Award to Promote Diversity (K08)	Provide intensive, supervised experience in laboratory-based biomedical cancer research for health professionals underrepresented in biomedical research.
PA-16-399 – Mentored Patient-Oriented Research Career Development Award to Promote Diversity (K23)	Encourage research-oriented clinicians from underrepresented groups to develop independent research skills and gain the experience needed to conduct patient-oriented research.
PAR-15-063 – NCI Transition Career Development Award to Promote Diversity (K22)	Provide an extended period of protected time and support for individuals who are advanced postdoctoral and/or newly independent research scientists from groups underrepresented in biomedical research.
Investigator Training	Purpose
PAR-15-053 – Exploratory Grant Award to Promote Workforce Diversity in Basic Cancer Research (R21)	Improve research workforce diversity by supporting investigators from underrepresented groups to conduct research projects focused on the basic biology of cancer.
Institutional Opportunities	Purpose
PAR-16-138 – Cancer Research Education Grants Program to Promote Diversity - Research Experiences (R25)	Improve research workforce diversity by supporting creative educational activities with a focus on research experiences.
PAR-16-139 – Cancer Research Education Grants Program to Promote Diversity - Courses for Skills Development (R25)	Improve research workforce diversity by supporting educational activities with a focus on courses for skills development.



The role of the AC is to provide overall leadership for the region's strategic planning and administrative functioning, including oversight of regional activities, evaluation and information dissemination and to ensure close working relationships between the AC and the three Regional Coordinating Directors.

Name/Degree	Email	Current Position	Institutional Affiliation	Areas of Expertise	Role on the Advisory Committee
Anderson, Roger T.	ra2ee@Virginia.EDU	Professor Department of Public Health Sciences Associate director for population sciences and co-leader for cancer control and population health research.	University of Virginia, School of Medicine	Development of sound knowledge and evidence on how to effectively lower the cancer burden among diverse populations; reduce cancer health disparities locally and nationally; and facilitate, test and implement the translation of new knowledge and technology to practice	Member
	Assistant: Glick, Jay *HS" JME3D@hscmail.mcc.virginia.edu				
Balkrishnan, Rajesh (Raj)	rb9ap@virginia.edu	Professor of Public Health Sciences Co-Program Director, Population Health and Prevention Sciences Director, Cancer Control Core, UVA Cancer Center	University of Virginia, School of Medicine	Health services research and epidemiology related to global medical care access. Quality of care in oncology, diabetes, and kidney disease in under-served populations.	
Blinka, Marcela MSW	mblinka1@jhmi.edu	GMaP RCD R1N	Johns Hopkins School of Medicine, JHCRCD	Cancer prevention, community based participatory research, community outreach and education, cancer clinical trials	Regional Coordinator in Region 1 of the National Cancer Institute's (NCI) Center to Reduce Cancer Health Disparities (CRCHD) Geographical Management of Cancer Health Disparities Program (GMaP).
Bowie, Janice PhD	jbowie@jhsph.edu	Associate Professor	Johns Hopkins School of Public Health Department of Health, Behavior and Society Urban Health Institute Baltimore, Maryland	Minority health disparities, women's health, cancer prevention and control, spirituality, community health, urban health, Community-based Participatory Research (CBPR), etc.	Advisory Committee Co-Chair

Name/Degree	Email	Current Position	Institutional Affiliation	Areas of Expertise	Role on the Advisory Committee
Christensen, Barbara	bchristensen@gibbscc.org	Manager, Research laboratory and Operations, Biocollection Program and Repository	Gibbs Cancer Center and Research Institute, South Carolina	Research specialist, lab operations, quality assurance processes	Advisor, expertise in basic research and cancer
Colon-Carmona, Adan	adan.coloncarmona@umb.edu	Associate Professor	University of Massachusetts - Boston	PACHE Program; Mentoring/Training; National Research Mentoring Network	Member
Cromo, Mark	mark.cromo@uky.edu		University of Kentucky		Regional Coordinator in Region 1 of the National Cancer Institute's (NCI) Center to Reduce Cancer Health Disparities (CRCHD) Geographical Management of Cancer Health Disparities Program (GMaP).
Dignan, Mark PhD, MPH	mbdign2@uky.edu	Director of the Prevention Research Center	University of Kentucky, Kentucky	Community-based Participatory Research (CBPR), cancer prevention, evaluation of community-based screening and early detection interventions	Advisory Committee Co-Chair Principal Investigator Chair, Evaluation Committee
Dobs, Adrian MD, MHS	adobs@jhmi.edu	Director, Johns Hopkins Center for Cancer Disparities	Johns Hopkins School of Medicine, Maryland	Clinical Research in HIV and Endocrinology; Faculty Development	Subcontract PI; Clinical Science Researcher
	Assistant : Hinke, Robyn rhinke1@jhmi.edu				
Felder, Tisha PhD, MSW	FELDERT@mailbox.sc.edu	Assistant Professor	College of Nursing, University of South Carolina, South Carolina	Behavioral sciences, Outcomes sciences; Cancer disparities research, Health Services Research Specialist	Chair, Diversity Training Committee
Gansauer, Lucy RN, MSN	lgansauer@gibbscc.org	Administrative Director	Spartanburg Cancer Center (NCCCP), South Carolina	Health Care Management, Health Administration	Help ICC connect with NCCCPs and large cancer Centers

Name/Degree	Email	Current Position	Institutional Affiliation	Areas of Expertise	Role on the Advisory Committee
Hargreaves, Margaret PhD	mhargreaves@mmc.edu	Professor of Internal Medicine	Meharry Medical College, Tennessee	Nutritionist, Community Based Participatory Research, Cancer Health Disparities	Provide institutional knowledge of GMaP
Hebert, James R ScD, MSPH	JHEBERT@mailbox.sc.edu	Director of the South Carolina Statewide Cancer Prevention and Control Program	University of South Carolina, South Carolina	Epidemiology and Cancer Prevention, Cancer and Nutritional Epidemiologist	Subcontract PI; Chair, Education and Outreach Committee
Houston, Julia	HOUSTOJF@mailbox.sc.edu	Administrative Coordinator	The Cancer Prevention and Control Program		Regional Coordinator in Region 1 of the National Cancer Institute's (NCI) Center to Reduce Cancer Health Disparities (CRCHD) Geographical Management of Cancer Health Disparities Program (GMaP).
Jones, Laundette	LJones@som.umaryland.edu	Assistant Professor	University of Maryland School of Medicine		
Patierno, Steven PhD	steven.patierno@duke.edu	Deputy Director of Duke Cancer Center Professor of Medicine	Duke University, North Carolina Community and Family Medicine	Cancer Survivorship and Patient Navigation Cancer control – laboratory, population level, and health services research	Bring expertise in Cancer Policy, Cancer Control and informatics; Past GMaP PI
Pratt-Chapman, Mandi PhD	mandi@gwu.edu	Associate Director	George Washington Cancer Institute, Washington, DC	Expertise in community programs in cancer prevention and patient navigation	Past GMaP PI
Rafie, Carlin	crafie@vt.edu	Assistant Professor	Virginia Tech	Nutrition/Physical activity	Member
Schifano, Katelyn	schifanokr@vcu.edu	NON CHE, Massey Cancer Center Virginia Commonwealth University Richmond, Virginia	Massey Cancer Center Virginia Commonwealth University Richmond, Virginia	Community outreach and education, cancer	NON representative, advisor

AC SUBCOMMITTEE ROSTER_FY17

Name/Degree	Email	Current Position	Institutional Affiliation	Areas of Expertise	Role on the Advisory Committee
Slade, Jimmie MA., MMAs	jaslade@verizon.net	Executive Chief Officer	Community Ministries of Prince George's County, Maryland	Community Activism, Community Partnership building and Programming	Community Member and Advisor
Sprague, Brian PhD	Brian.Sprague@uvm.edu	Associate Professor	Vermont Cancer Center Office of Health Promotion and Research	Director of the Vermont Breast Cancer Surveillance System Registry PI, Breast Cancer Surveillance System Co-PI, Vermont PROSPR Research Center Associate Professor Department of Surgery	Member
Stein, Gary S.	Gary.Stein@uvm.edu	Professor	Vermont Cancer Center Surgery	Director, University of Vermont Cancer Center Professor and Chairperson, Department of Biochemistry Professor, Department of Surgery	Member
Wu, Cathy PhD	wuc@dbi.udel.edu	Chair of Bioinformatics and Computation Biology	University of Delaware, Delaware	bioinformatics and Computational Biology/Trainee Development	Liaison to Orphan States. Offer fresh perspectives on GMaP activities. GMaP new member
Zabora, James (Jim) ScD	jzabora1@jhmi.edu	Director of Outreach and Education, NON CHE, Johns Hopkins Center to Reduce Cancer Disparities	Johns Hopkins University, Maryland	Cancer prevention, community based participatory research, community outreach and education, psychosocial services and problem-solving education	Advisor, NON / UMB-CURE representative

The GMaPR1 North Diversity Training Subcommittee has the primary goal of promoting scientific and professional development of regional trainees and placing qualified trainees, new and early stage investigators into faculty positions and job vacancies within and across regional hubs.

Name	Current Position	Institutional Affiliation
Tisha Felder, PhD, MSW, CHAIR	Assistant Professor	University of South Carolina
Mark Dignan, PhD, MPH	Professor	University of Kentucky
Janice Bowie, PhD, MPD,	Associate Professor of Health Behavior and Society	Johns Hopkins University
Carolyn Cousin, PhD	Professor of Biological and Environmental Sciences	University of the District of Columbia
Jimmy Ruiz, MD	Assistant Professor of Hematology and Oncology	Wake Forest University
Mary A. Smith, PhD	Chairperson of the Department of Biology	North Carolina A& T State University
Maghboeba Mosavel, MA, PhD	Associate Professor, Social and Behavior Health	Virginia Commonwealth University
Rafael Guerrero-Preston, DrPH	Assistant Professor	Johns Hopkins University
Greg Carey, PhD	Assistant Professor of Microbiology and Immunology	University of Maryland
Carlton Cooper, PhD	Assistant Professor of Black and American Studies	University of Delaware
Mindy Rogers	National Outreach Network Community Health Educator	University of Kentucky

The GMaPR1 North Education and Outreach Sub-Committee has the primary goal of promoting new and sustaining existing relationships and collaborations between regional cancer disparities researchers, communities and trainees through timely information exchange and resource sharing within and across regions.

Name	Current Position	Institutional Affiliation	Areas of Expertise	Role on the ICC	Contributor
James R Hebert, ScD, MSPH	Director of the South Carolina Statewide Cancer Prevention and Control Program	<i>University of South Carolina</i>	Epidemiology and Cancer Prevention	CHAIR	✓
Julia Houston, MSW	Administrative Coordinator	South Carolina Statewide Cancer Prevention and Control Program	Health Disparities	RCD	✓
Nadine Barrett, PhD, MA, MS	Director	Office of Health Equity, <i>Duke University</i> , North Carolina	Director/OHED		✓
Carlin Rafie, RD, PhD	Clinical Affiliation Coordinator	Massey Cancer Center, <i>Virginia Commonwealth University</i> , Virginia	Expertise in Community Research, Coalition Building, and Clinical Research Coordination		✓
Stephenie Kennedy, EDD	Director, Cancer Prevention and Control; Associate Center Director, Mary Babb Randolph Cancer Center	Cancer Prevention and Control; <i>Mary Babb Randolph Cancer Center</i> , <i>West Virginia University</i> , West Virginia	Leader in Cancer Prevention and Outreach		✓
Sherrie Wallington, PhD	Assistant Professor of Oncology, Director of Health Disparities Initiative	Georgetown Lombardi Comprehensive Cancer Center, Washington DC	K01 awardee		✓
Nora Katarakes, RN, MSN, OCN	Community Health Outreach and Education Manager	<i>Helen F. Graham Cancer Center</i> , Delaware	Expertise in Community Outreach and Education		✓
Neha Jaggi, MPH	Research Assistant	South Carolina Statewide Cancer Prevention and Control Program, University of South Carolina	<i>Trainee</i>	Research Assistant	✓
Amber Cook, BSc	PhD Student in Chemistry	Diversity Supplement Trainee, <i>North Carolina State University</i> , North Carolina	<i>Trainee</i>		✓

GMAP Region 1 North Regional Coordinating Directors (GMAP R1N RCDs)



Marcela Blinka, MSW, PhD (c)
Regional Coordinating Director 1

**Senior Research Program
Coordinator**

**Johns Hopkins Center to Reduce
Center Disparities**

**Johns Hopkins School of
Medicine**

Email: mblinka1@gmail.com

Marcela Blinka has a Masters of Social Work and is A PhD candidate in Social Work at The Catholic University of America. Ms. Blinka is interested in cancer health disparities research, particularly as it relates to the participation of minorities in cancer clinical trials. She has extensive experience working with underserved populations, including Latino and African American communities in Baltimore, and is part of several research projects at Johns Hopkins

Areas of Interest

Health disparities, cancer clinical trials, health services research, healthcare access, health behavior change, and community engagement.



Julia F. Houston, MSW
Regional Coordinating Director 2

Administrative Coordinator II

**South Carolina Cancer
Disparities Community Network**

**South Carolina Statewide Cancer
Prevention and Control Program**

University of South Carolina

Email: houstojf@sc.edu

Julia Houston's interests are in coalition-building and resource development, particularly in cancer advocacy organizations. As a nationally recognized leader as a State Policy Liaison for the National Patient Advocate Foundation, Ms. Houston was nationally recognized by the National Patient Advocate Foundation as a State Policy Liaison for her communication and organizational skills and her work as a healthcare advocate. She has a particular interest in the application of technology to inform, connect and support cancer research as well as cancer survivors and caregivers relative to the prevention and control of cancer and all cancer-related disease.

Areas of Interest

Health disparities; healthcare access; cancer survivorship and caregiver quality of life issues; decision-making processes; behavioral changes and community engagement.



Mark A. Cromo, BS
Regional Coordinator 3

Program Manager

**Appalachia Community Cancer
Network (ACCN)**

Prevention Research Center

University of Kentucky

Email: mark.cromo@uky.edu

Mr. Cromo has served as the Program Manager for the Appalachia Community Cancer Network (ACCN) Community Networks Program for the past nine years, and this role has prepared me well for my proposed Coordinator role in this project. As part of my role with the ACCN, I coordinate project management and reporting across five project sites in five states, so I am well versed in the organizational and management needs of a multi-site project such as GMAP. I have previous experience with Region 1/2 GMAP also, having participated in the development of the regional CNAT survey, monthly conference calls, and implementation of the Region 1/2 obesity pilot project. I am looking forward to working with the Coordinators at Johns Hopkins University and the University of South Carolina, along with the corresponding Principal Investigators, to manage the implementation of the project.

Areas of Interest

Project Management and Coordination

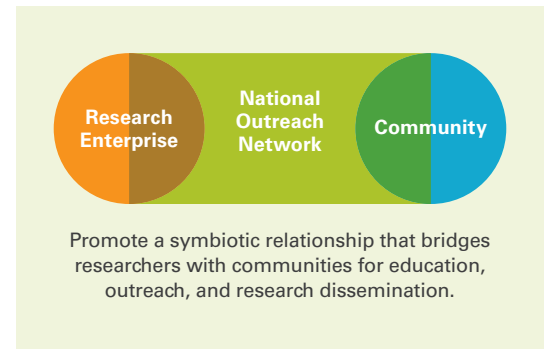
NATIONAL OUTREACH NETWORK (NON)

Overview

The National Cancer Institute's (NCI) National Outreach Network is a multidisciplinary program that bridges NCI-supported outreach and community education efforts with cancer health disparities research and training programs. NON conducts outreach and research activities through trained community health educators located at NON's partnering research sites.

Objectives

- Enhance researchers' and trainers' understanding of diverse communities.
- Actively incorporate outreach activities into NCI's community-based cancer health disparities research programs.
- Develop best practices on effective outreach strategies to reach at-risk and underrepresented communities.
- Inform the community about important research goals and seek input on the research agenda.
- Provide a vital link between NCI and communities that enables the quick dissemination of cancer information.
- Develop local interventions and campaigns that effectively distribute NCI cancer information to communities in order to enhance decision-making processes and strategies to cope with specific health disparity problems.

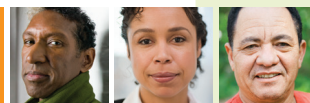


Goals

- Enhance NCI's ability to develop and disseminate culturally sensitive, evidence-based cancer information that is tailored to the specific needs and expectations of at-risk and underrepresented communities.
- Increase communities' knowledge, decision-making skills, and involvement in cancer research.
- Promote a diverse cancer health disparities workforce.

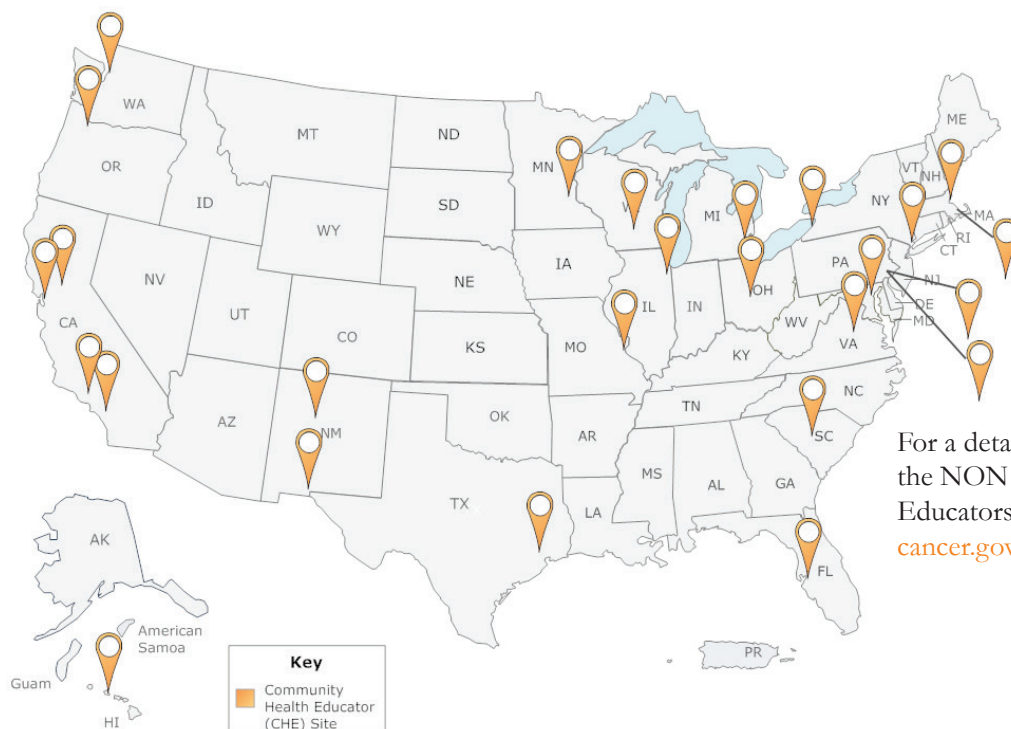
NCI Programs Participating in NON:

- Community Networks Program Centers
- Comprehensive Partnerships to Reduce Cancer Health Disparities
- Community Clinical Oncology Program
- Minority-Based Community Clinical Oncology Program
- NCI-Designated Cancer Centers



COMMUNITY HEALTH EDUCATORS (CHEs)

Community Health Educators—individuals experienced in communications, comprehensive cancer control, training, program planning, and evaluation—are embedded into NON's 26 participating program sites around the country. They serve as a vital link for networking between NCI, grantee institutions, and communities to address needs and disseminate culturally tailored cancer information.



For a detailed listing of all the NON Community Health Educators, visit: <http://crchd.cancer.gov/inp/che-listing.html>



Scan this QR code with your mobile device to access NON information online.

CHE Outreach Activities

- Assess the community's baseline health needs and resources.
- Develop a long-term education/outreach plan to address a local cancer health disparity.
- Assist in the planning and implementation of education/outreach activities.
- Increase awareness and foster adoption of NCI research findings on cancer prevention, early detection, and treatments adapted for targeted audiences/communities.
- Disseminate culturally appropriate, evidence-based information and educational materials on cancer prevention and treatment, including clinical trials.
- Use social media technology, such as Twitter, RSS, and Facebook, to increase exposure of NCI messages.
- Partner with community-, civic-, and faith-based organizations to extend the outreach and dissemination of cancer information and advances.

- Bring the community voice to the research team.
- Empower the community to alter health behaviors.

CHE Research Activities

- Disseminate NCI messages, materials, programs, and research opportunities, as needed.
- Assist in hypothesis-driven research programs to increase use of and access to beneficial early detection procedures, including mammograms, Pap smears, colorectal screening, and prostate antigen testing, and healthy behaviors such as smoking cessation.
- Support screening, prevention, biospecimen collection, and clinical trials.
- Keep up-to-date with knowledge through mandatory training by teleconference and webinar.

Name	Institutional Affiliation	Population Focus
Mindy Rogers	University of Kentucky, Markey Cancer center	Rural/Medically Underserved; White/Caucasian; Appalachian Kentucky; Markey Cancer Center catchment area
Theron Scott	Johns Hopkins University, Kimmel Comprehensive Cancer Center	Black/African American; Hispanic
Jim Zabora	Johns Hopkins University, Kimmel Comprehensive Cancer Center	Black/African American; Hispanic
Rhonda Boozer-Yearly	University of Maryland, Marlene and Stewart Greenebaum Cancer Center	Black/African American in underserved communities in Baltimore; urban
Jenna Schiffelbein	Norris Cotton Comprehensive Cancer Center, Dartmouth-Hitchcock Medical Center	White/Caucasian; rural, medically underserved
Katelyn Schifano	Virginia Commonwealth University, Massey Cancer Center	Black/African American communities, both in Richmond and surrounding areas; urban; rural
Lindsay Hauser	University of Virginia Cancer Center	White/Caucasian; rural, medically underserved
Betsy Grossman	University of Virginia Cancer Center	White/Caucasian; rural, medically underserved