



Communication Sciences and Disorders

Arnold School of Public Health
UNIVERSITY OF SOUTH CAROLINA



USC_COMD Newsletter

Spring 2025

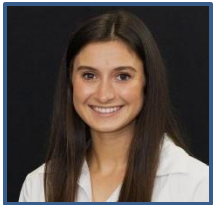
Top Articles:



[Research professor, philanthropist Al Montgomery passes away after long career advancing field of communication sciences and disorders](#)



[USC_COMD's speech-language master's program was officially reaccredited in February 2025](#)



[Recent Faculty Highlight: Hannah Midles, AuD, CCC-A](#)



[Recent Student Highlight: Amelia Mudd, MS-RES Class of 2025](#)



[Recent Alumni Highlight: Sarah Allen Hilts, CF-SLP](#)

Announcements:

A huge thank you to all volunteers, students, and employers who came out to our meet and greet event on March 1st! We had 27 employers from all over the state attend our meet and greet! Our soon-to-be graduating class is well on their way to searching and securing their clinical fellowships. Thank you everyone for coming!

Many of our faculty, staff, doctoral and master students presented at the SCSHA 2025 Conference and the ASHA 2024 Conference. USC_COMD had a total of 16 presentations and posters at SCSHA and 12 presentations and posters at ASHA.





Physically active, socially engaged



Sigfus Kristinsson wins national award to support stroke research



Inside Carolina Episode 30: Carolina Day; audiology impact



Opening the world of sound



I Am Public Health: Thomas Christensen

Many members of the leadership team from USC_COMD will be attending CAPCSD in April. While there, they have several presentations. After the recent successful re-accreditation of the program, they will be sharing ideas for presenting curriculum during CAA site visits during two sessions.

Thank you to Cocky, the USC Police Department, Kaci the Koala, and the incredible teams from Advanced Bionics, Cochlear Americas, and Med-EL Corporation for helping make our Popsicle Picnic a fantastic event for The Montgomery Speech, Language, and Hearing Clinic's cochlear implant and hearing-impaired community!

Congratulations to USC_COMD Alumni, [Ann Lyles](#), on being awarded The Rolland J. Van Hattum Award.

* Recent Grants and Publications from October 2024 – March 2025.

Faculty members are **bolded**

Mentees are underlined



Recently Awarded Grants and Awards*:

Dr. Lisa Fitton, [National Institutes of Health](#). [Diagnostic identification of language and reading disorders among bilingual learners](#). September 2024 – June 2029: \$3,100,178

Dr. Sigfus Kristinsson, [American Heart Association](#), [American Brain Foundation](#), and [American Academy of Neurology](#). [Lawrence M. Brass, MD, Clinical Research Training Scholarship in Stroke](#). 2025 – 2027. \$150,000.

Celine Benedico, Residential Graduate Student, [SCSHA](#). [Jennifer Mungo Student of the Year Award](#). March 2025.

Zeinab Khoshhal Mollasaraei, PhD Student, NIDCD Research Symposium in Clinical Aphasiology Fellowship to attend [Clinical Aphasiology Conference](#) in 2025.

Moji Norozi, PhD student, [International Society for Autism Research](#). Student Travel Award. 2024.

Dr. Kimaya Sarmukadam, Post Doctoral, [International Society for Autism Research](#). Early Career Travel Award. 2024.

Dr. Kimaya Sarmukadam, Post Doctoral, [National Fragile X Foundation](#). [Junior Investigator Award](#). 2024.

Karina Sheth, Undergrad, [Autism Science Foundation](#), Summer Research Fellowship. 2025.

Recent Publications*:

Ashjaei, S., Behroozmand, R., Fozdar, S., Farrar, R., & **Arjmandi, M.** (2024). Vocal Control and Speech Production in Cochlear Implant Listeners: A Review within Auditory-Motor Processing Framework. *Hearing Research*, Volume 453, 2024, 109132, ISSN 0378-5955, <https://doi.org/10.1016/j.heares.2024.109132>.

Barnes, C. K., Simpson, K. N., Wilmskoetter, J., Dooley, M. & **Bonilha, H. S.** (2025). Feeding Infants on Noninvasive Respiratory Support: Practice at One Academic Medical Center. *American Journal of Speech-Language Pathology*. https://doi.org/10.1044/2024_AJSLP-24-00302.

Barnes, C. K., Simpson, K. N., Wilmskoetter, J., McGhee, H., Nichols, K., **Bonilha, H. S.** (2025). Qualitative Analysis of Therapist Documentation of Assessments of Orally Feeding Infants Who Require Noninvasive Respiratory Support. *American Journal of Speech-Language Pathology*. https://doi.org/10.1044/2024_AJSLP-24-00294.



Bonilha, H. S., Ma, T., Prabhakaran, S., Bhadsavle, L. J., Belagaje, S. R., Blanke, D., ... Nahab, F. (2025). The impact of social determinants of health on stroke rehabilitation service utilization measured during acute stroke hospitalization. *Topics in Stroke Rehabilitation*, 1–8. <https://doi.org/10.1080/10749357.2025.2466391>.

Fahey, D., Yeaton, J., Stark, B., **den Ouden, D.**, Hickok, G., **Fridriksson, J.**, **Matchin, W.** (2025). An objective coding scheme for grammatical production deficits in aphasia reveals a categorical divide between agrammatism and paragrammatism. *Journal of Speech, Language, and Hearing Research*, 1-16.

Giglio, L., Sharoh, D., Ostarek, M., Hagoort, P. (2024). Connectivity of Fronto-Temporal Regions in Syntactic Structure Building During Speaking and Listening. *Neurobiology of Language* 2024; 5 (4): 922–941. https://doi.org/10.1162/nol_a_00154.

Giglio, L., Hagoort, P., Ostarek, M. (2024). Neural encoding of semantic structures during sentence production, *Cerebral Cortex*, Volume 34, Issue 12, December 2024, bhae482, <https://doi.org/10.1093/cercor/bhae482>.

Henbest, V.S. & **Apel, K.** (2024). The relation of linguistic awareness skills to reading and spelling for autistic and non-autistic elementary school-age children. *Journal of Speech, Language, and Hearing Research*. https://doi.org/10.1044/2024_JSLHR-23-00108.

Hogan, A. L., Smith, K., Mian, N. D., Black, C., Hunt, E., Knott, C., ... Roberts, J. (2025). Utility of the Modified Anxiety Dimensional Observation Scale in Autistic Preschoolers with Varying Intellectual Functioning. *Journal of Clinical Child & Adolescent Psychology*, 1–15. <https://doi.org/10.1080/15374416.2025.2454647>.

Lee, H. K., **Bonilha, H. S.**, Hong, I. (2024) Relationship Between Voice Problems and Depression Among American Adults. *Otolaryngology – Head and Neck Surgery*. <https://aao-hnsfjournals.onlinelibrary.wiley.com/doi/full/10.1002/ohn.946>.

Matchin, W., Mollasaraei, ZK, **Bonilha, L.**, Rorden, C, Hickok, G, **den Ouden, D** et al.. (2024). Verbal working memory and syntactic comprehension segregate into the dorsal and ventral streams, respectively. *Brain Commun.* 2024;6 (6):fcae449. <https://doi.org/10.1093/braincomms/fcae449>.

Nemati, S., **Arjmandi, M.**, **Newman-Norlund, R.**, **Newman-Norlund, S.**, & **Fridriksson, J.** (2024). White Matter Integrity of Age-Related Hearing Loss and Cognitive Impairment. *Journal of the Alzheimer's Association*, e093247. <https://doi.org/10.1002/alz.093247>.

Schwen Blackett, D, **Kristinsson, S.**, Walker, G, **Sayers, S.**, Gibson, M, Wilmskoetter, J et al.. (2025). A Comparison of Item Acquisition and Response Generalization for Semantic Versus Phonological Treatment of Aphasia. *J Speech Lang Hear Res.* 2025; :1-16. https://doi.org/10.1044/2024_JSLHR-24-0030.



Yoo, S., **Bonilha, H.S.** & Hong, I. (2024). Association Between Dysphagia and Depressive Symptoms: Propensity Score Matching Approaches. *Dysphagia*.

<https://doi.org/10.1007/s00455-024-10770-7>.

Zhu, H., Fitzhugh, M. C., Keator, L. M., Johnson, L., Rorden, C., **Bonilha, L., Fridriksson, J., C.**, Rogalsky, C. (2025). How Can Graph Theory Inform the Dual-stream Model of Speech Processing? A Resting-state Functional Magnetic Resonance Imaging Study of Stroke and Aphasia Symptomology. *J Cogn Neurosci* 2025; 37 (3): 737–766.

https://doi.org/10.1162/jocn_a_02278.

