



UNIVERSITY OF  
SOUTH CAROLINA  
College of Social Work

Teri Browne, PhD, MSW  
Associate Dean for Faculty and Research  
Co-Director, Interprofessional Education for the Health Sciences  
Associate Professor  
@TeriBrowne

College of Social Work  
University of South Carolina

November 13, 2018

## THE IMPORTANCE OF INTERPROFESSIONAL TRAINING & TEAM WORK FOR SOCIAL WORKERS

### FUNDING

This work is supported by the Health Resources and Services Administration (HRSA) of the U.S. Department of Health and Human Services (HHS) under Award #M01HP31378 for a project entitled Rural Interprofessional Behavioral Health Scholars (RIBHS) Program and the Duke Endowment Award #6631-SP. This information or content and conclusions are those of the author and should not be construed as the official position or policy of, nor should any endorsements be inferred by HRSA, HHS or the U.S. Government.

Thanks to Dr. Reitmeier and Dr. Iachini for presentation content

## WHY AREN'T PEOPLE PREPARED FOR AIRPORT SECURITY RULES ABOUT LIQUIDS ?



## WHY?

Security doesn't do a great job catching all the liquids and gels

Ignorance/oblivious

- Inexperienced travelers

Tradition- people used to doing it the way they are used to

People don't like to follow rules

People can't process all the information, information overload

People not educated about this

## WHY?

People think they can get away with it

Going through security is such a hassle anyway, can be overwhelming

Inexperienced travelers

People procrastinate

\$\$\$ Too expensive to buy small bottles, or beverages in the airport

Literacy

Vision problems

Mental status

WHY DON'T OUR CLIENTS DO WHAT WE WANT  
THEM TO DO?



## PSYCHOSOCIAL BARRIERS TO OUTCOMES

Security doesn't do a great job catching all the liquids and gels

Ignorance/oblivious

- Inexperienced travelers

Tradition- people used to doing it the way they are used to

People don't like to follow rules

People can't process all the information, information overload

## PSYCHOSOCIAL BARRIERS TO OUTCOMES

People think they can get away with it

Going through security is such a hassle anyway, can be overwhelming

Inexperienced travelers

People procrastinate

\$\$\$ : Too expensive to buy small bottles, or beverages in the airport

Literacy

Vision problems

Mental status

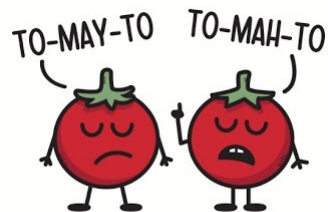


## HOW TO ADDRESS THESE BARRIERS?

Interprofessional approach

Team work

## CHALLENGES TO THIS APPROACH



### Interdisciplinary

- "A discipline is a body of scientific knowledge that is ever-changing with the integration of creative conceptualizations and formal research findings"
- More than one area of knowledge

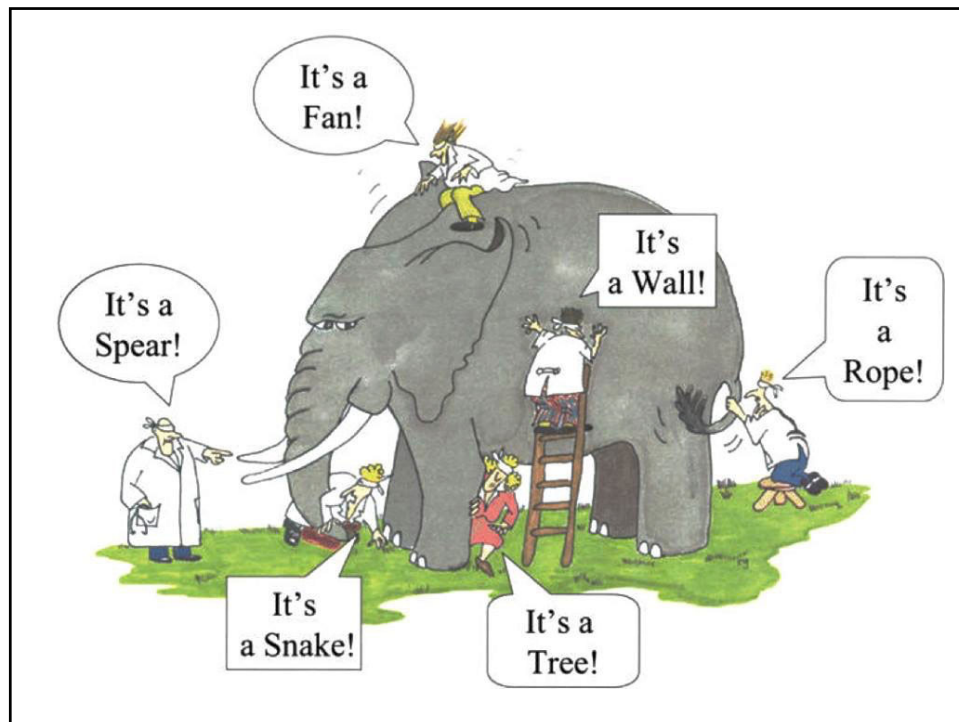
### Interprofessional

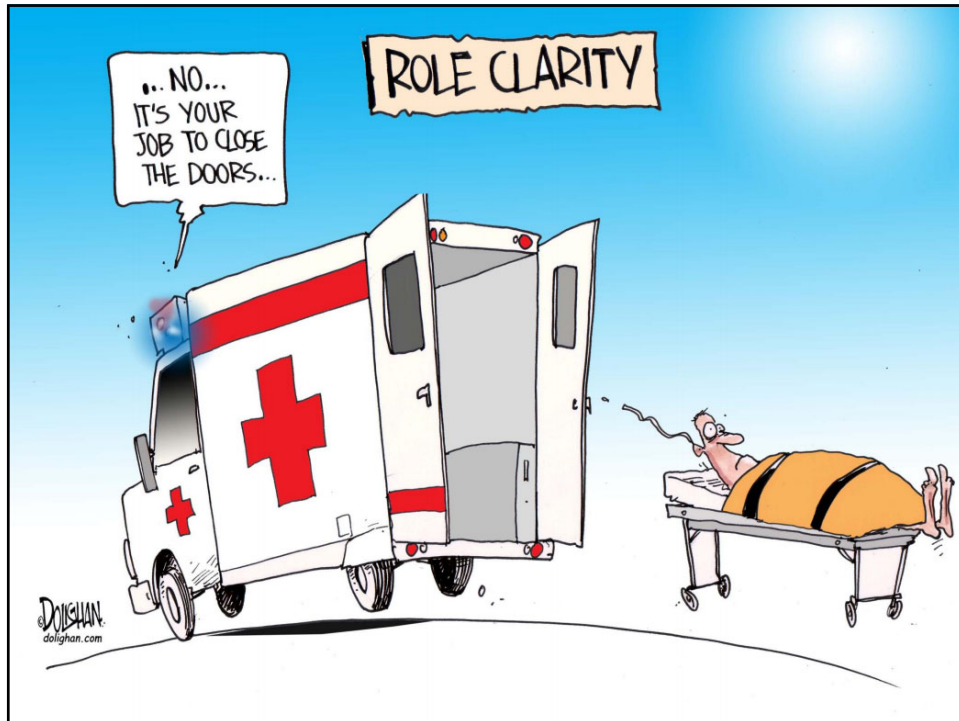
- "A profession is an organizational body consisting of persons who are committed to a vision and are educated with particular disciplinary knowledge to promote that vision."
- More than one profession

### Transdisciplinary

- Blurring disciplinary bounds

Parse, 2015





# ! WARNING

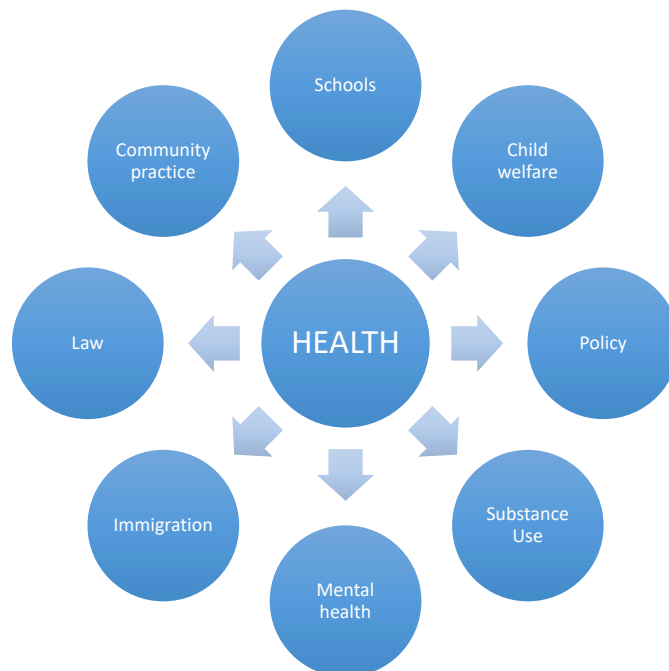
This is not all about health  
It may sound like it is all about health  
But it is not all about health



# WARNING

Health professions have been the leaders in the field of interprofessional education and care

Health professions have lead the way to mandate IPE in accreditation







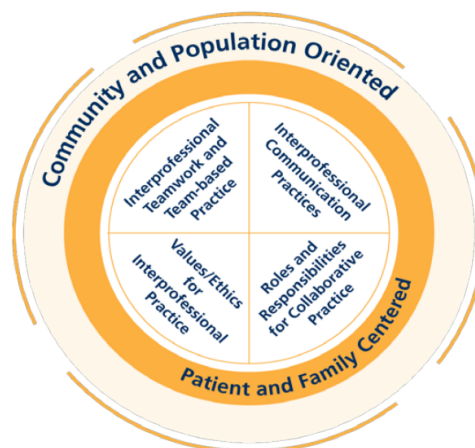


## Core Competencies for Interprofessional Collaborative Practice:

**2016 Update**

Council on Social Work Education

## Interprofessional Collaboration Competency Domain

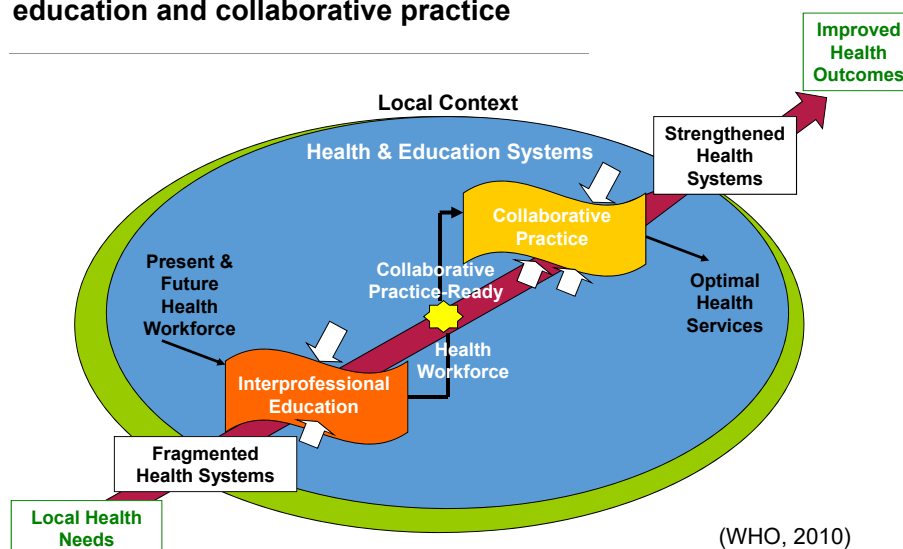


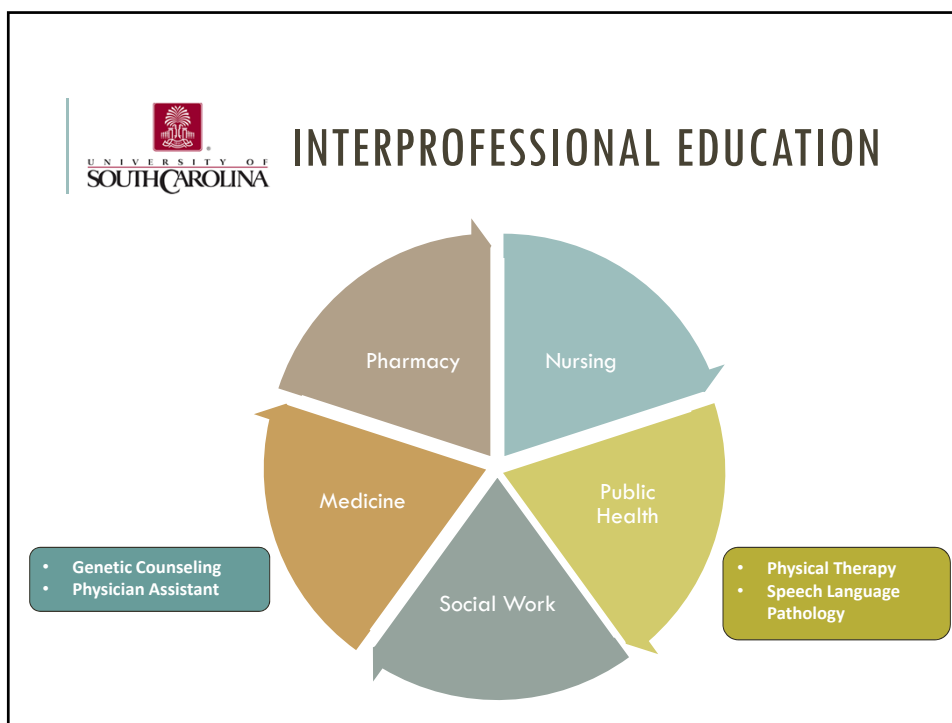
The Learning Continuum pre-licensure through practice trajectory

## CORE COMPETENCIES FOR INTERPROFESSIONAL COLLABORATIVE PRACTICE

1. Work with individuals of other professions to maintain a climate of mutual respect and shared values. (Values/Ethics for Interprofessional Practice)
2. Use the knowledge of one's own role and those of other professions to appropriately assess and address the health care needs of patients and to promote and advance the health of populations. (Roles/Responsibilities)
3. Communicate with patients, families, communities, and professionals in health and other fields in a responsive and responsible manner that supports a team approach to the promotion and maintenance of health and the prevention and treatment of disease. (Interprofessional Communication)
4. Apply relationship-building values and the principles of team dynamics to perform effectively in different team roles to plan, deliver, and evaluate patient/population centered care and population health programs and policies that are safe, timely, efficient, effective, and equitable. (Teams and Teamwork)

### Framework for action on interprofessional education and collaborative practice





### WHY GET INVOLVED IN INTERPROFESSIONAL CLASSES AND ACTIVITIES?



Educate  
Together

- As a social worker you will ALWAYS work on teams or with other professions
- Team training and experience looks good on a resume and in interviews
- You can improve your care by learning about your team members and how to work with them
- **Other disciplines want/need to know more about social work!**



## TRAINING THE NEXT GENERATION

•NASW/ CSWE Social Work Health Care Education and Leadership (HEALS) Scholars Program





## TRAINING THE NEXT GENERATION

- U.S. Health Resources and Services Administration's *Behavioral Health Workforce Education and Training for Professionals Program*



## RIBHS COMPONENTS

**Didactic:** Year Long Field Seminar Course which included specially made webinars



**Experiential:** Developing placements in rural areas or with medically underserved populations

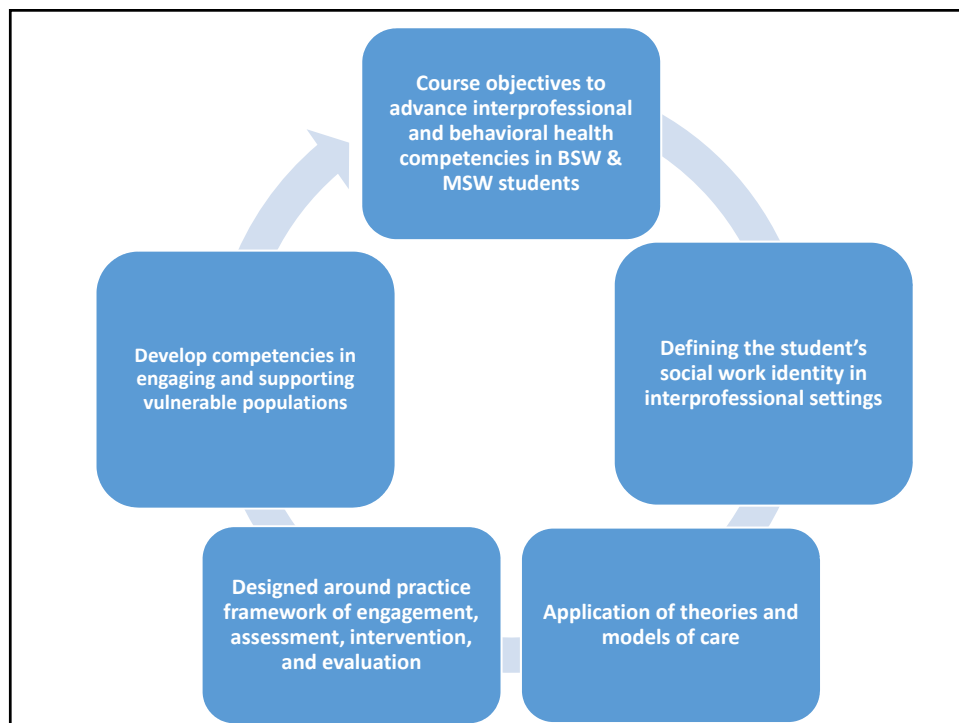


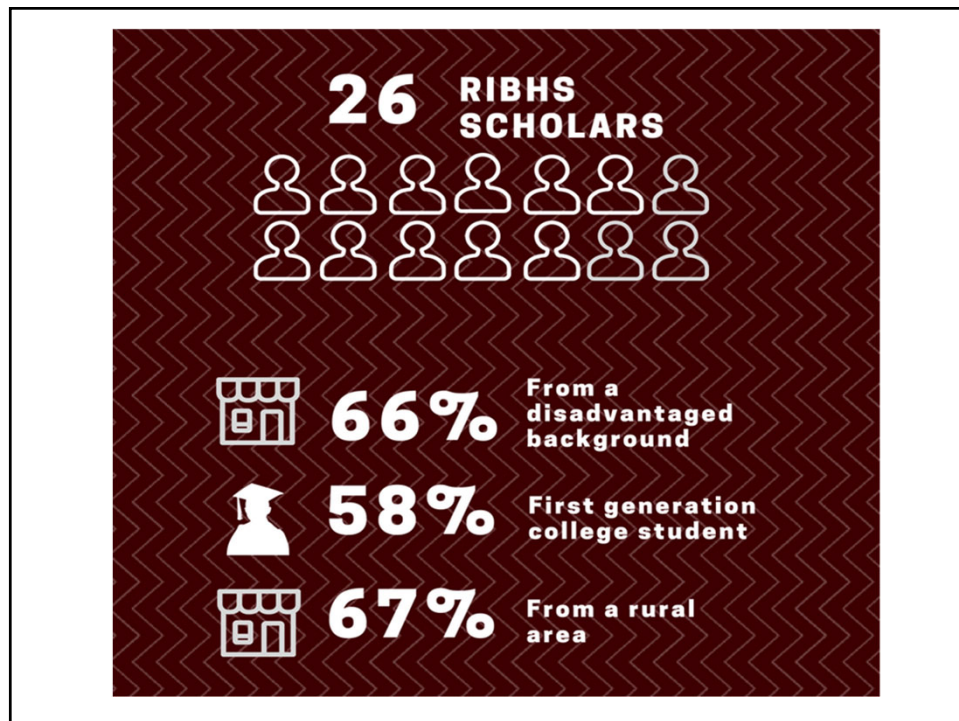
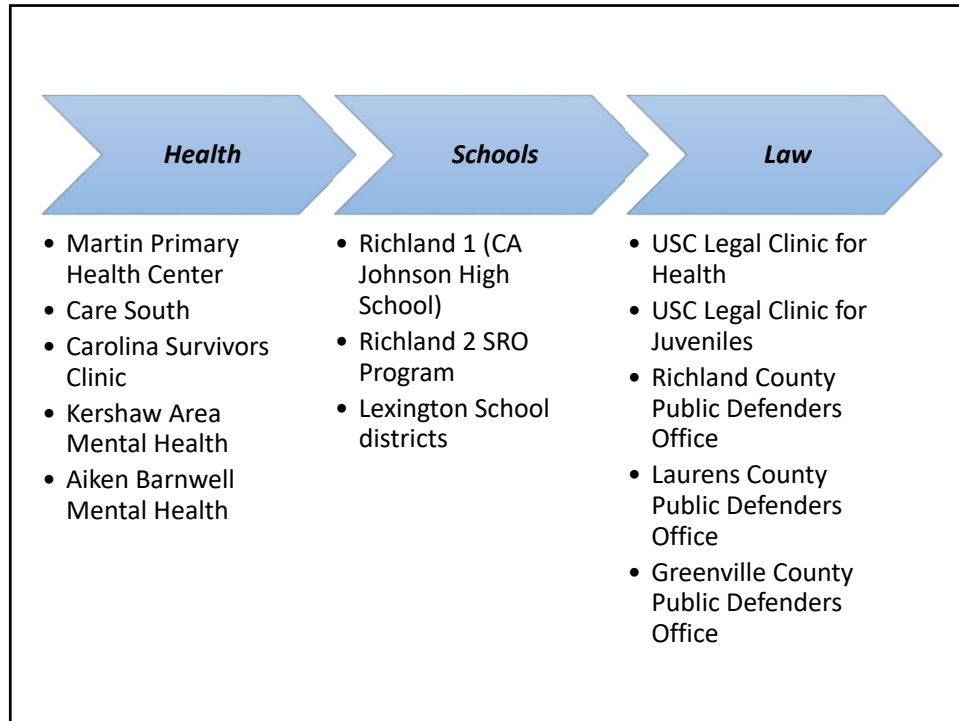
## CONNECTING RURAL INTERPROFESSIONAL BEHAVIORAL HEALTH WITH FIELD EDUCATION COURSES



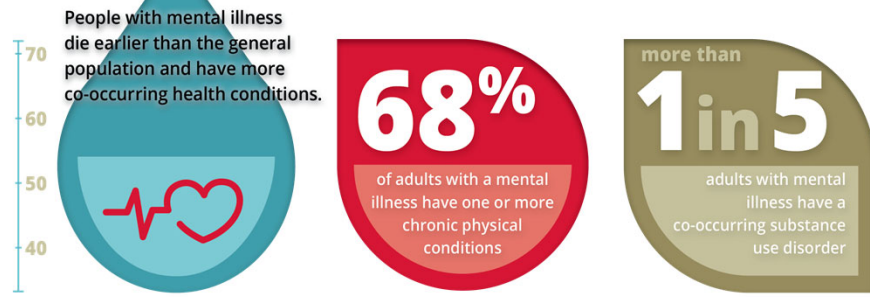
Allows a social work program to place students on interprofessional teams

Added competency development in the areas of interprofessional care, teamwork, interprofessional collaboration, etc.



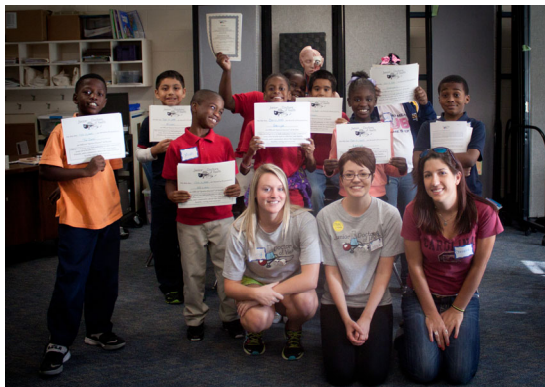


## The PROBLEM



## SERVICE LEARNING IPE CLASS

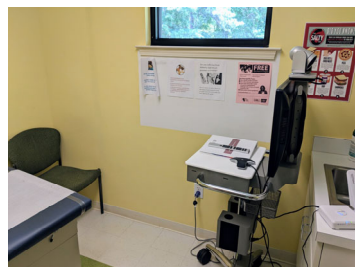
SOWK679: Addressing Childhood Obesity through Community Approaches



## SOWK 678: TRANSFORMING HEALTHCARE FOR THE FUTURE



## TELE-MENTAL HEALTH CLASS





[HTTPS://IPE.SC.EDU/](https://ipe.sc.edu/)

<https://www.youtube.com/watch?v=YSnxb7O2RG0&feature=youtu.be>





## GETTING TO THE TABLE

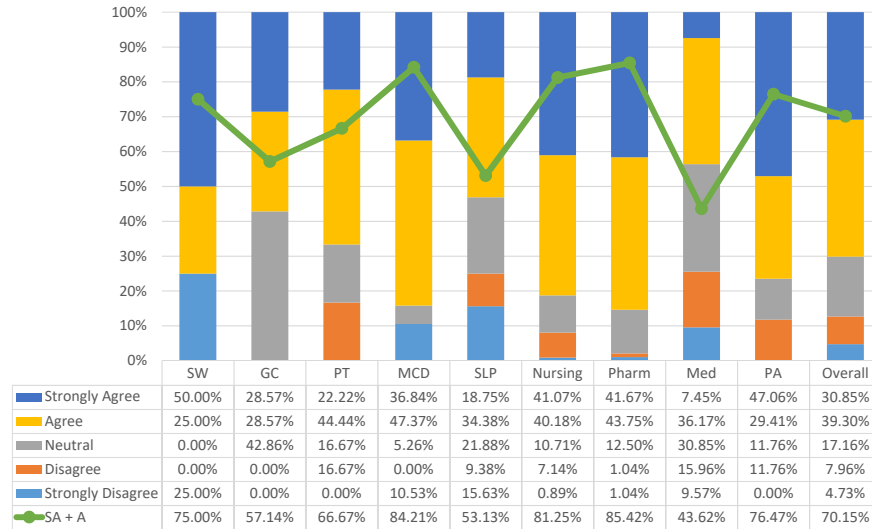
What can social workers do to get to the table and lead interprofessional teams?

- Find cross-institutional ways to collaborate
- Learn to communicate and market social work
- Frame social work from other perspectives
  - **Speak the language of other professions**
- Vary the message to fit the mission of the team
- Find ways to partner with other disciplines

## WHAT UNIQUE CONTRIBUTIONS CAN SOCIAL WORKERS MAKE ON INTERPROFESSIONAL TEAMS?



**Through this course, my knowledge about my profession's role in interprofessional work increased.**



**Social Determinants of Health  
are critically important**



*"Health starts where we live,  
learn, work and play."*

Robert Wood Johnson Foundation, 2010



- Education
- Food insecurity
- Homelessness
- Mental Health
- Criminal Justice
- Aging
- Immigration
- Poverty
- Child welfare

25

JOURNAL OF INTERPROFESSIONAL CARE  
<https://doi.org/10.1080/13561820.2018.1516635>



ORIGINAL ARTICLE



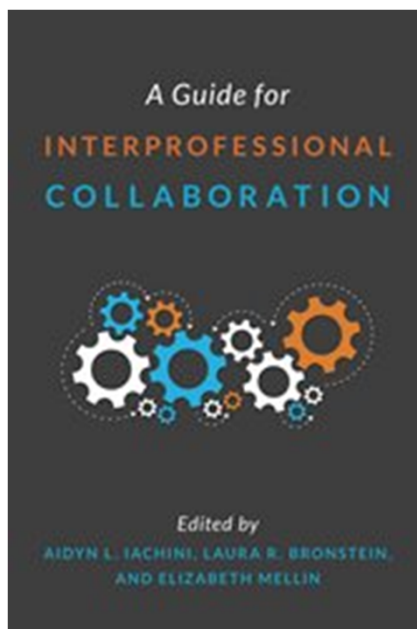
## Examining collaborative leadership through interprofessional education: findings from a mixed methods study

Aidyn L. Iachini<sup>a</sup>, Dana D. DeHart<sup>a</sup>, Teri Browne<sup>a</sup>, Brianne L. Dunn<sup>b</sup>, Elizabeth W. Blake<sup>b</sup>, and Christine Blake<sup>c</sup>

<sup>a</sup>College of Social Work, University of South Carolina, Columbia, SC, USA; <sup>b</sup>South Carolina College of Pharmacy, University of South Carolina, Columbia, SC, USA; <sup>c</sup>Department of Health Promotion, Education and Behavior, Arnold School of Public Health, University of South Carolina, Columbia, SC, USA

# Enhancing Interprofessional Education: Integrating Public Health and Social Work Perspectives

| Cheryl L. Addy, PhD, Teri Browne, PhD, Elizabeth W. Blake, PharmD, Jennifer Bailey, MEd



## Rural Matters: Ethical Considerations in Rural Practice

**Instructors:**  
**Teri Browne, PhD, MSW**  
 Associate Professor,  
 University of South Carolina College of Social Work  
**Melissa Reitmeyer, PhD, MSW**  
 Director of Field Education,  
 University of South Carolina College of Social Work

**Four opportunities to attend!**

**May 30, 2018**  
 11:00am-1:00pm  
 Columbia, SC | Mid-Carolina AHEC

**June 4, 2018**  
 11:00am-1:00pm  
 Greenwood, SC | Upstate AHEC

**July 25, 2018**  
 11:00am-1:00pm  
 Conway, SC | Pee Dee AHEC

**August 3, 2018**  
 11:00am-1:00pm  
 Charleston, SC | Lowcountry AHEC

Visit our website to find more dates, times, and locations.

**Description**  
 Practices in rural South Carolina have unique needs. Health and behavioral health professionals in rural settings encounter unique ethical practice considerations, such as dual or multiple relationships, professional boundaries, confidentiality, community resources and conflicts of interest. This training seeks to provide necessary education and best practices related to unique ethical considerations for interprofessional health services in rural settings.

**Objectives**  
 At the completion of this program, the participant will be able to:

- Describe three ethical dilemmas common in rural health and behavioral health practice
- List three ways that professional codes of ethics can be applied to ethical dilemmas common in rural health and behavioral health practice
- Identify three best practices related to ethics in rural health and behavioral health practice

**Cost:** Free  
 This program is free to attend, but registration is required.

For more information and to register, visit:  
[www.scahec.net/schools](http://www.scahec.net/schools)



## QUESTIONS/COMMENTS?

For future comments or questions, please contact

Teri Browne [browne@sc.edu](mailto:browne@sc.edu) @TeriBrowne