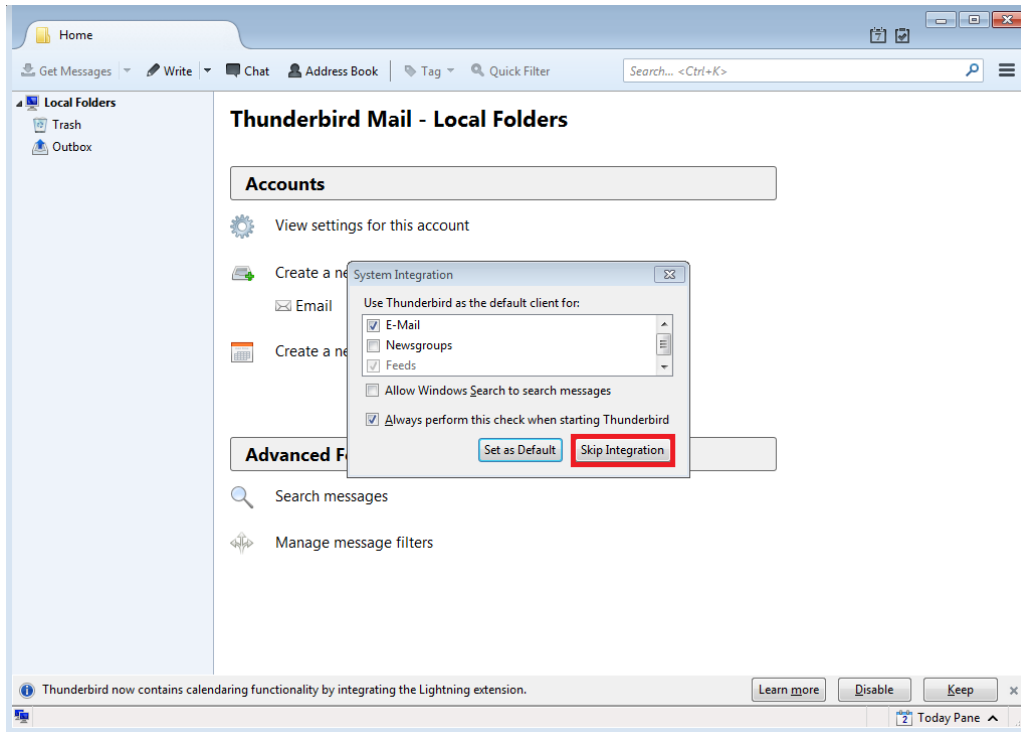


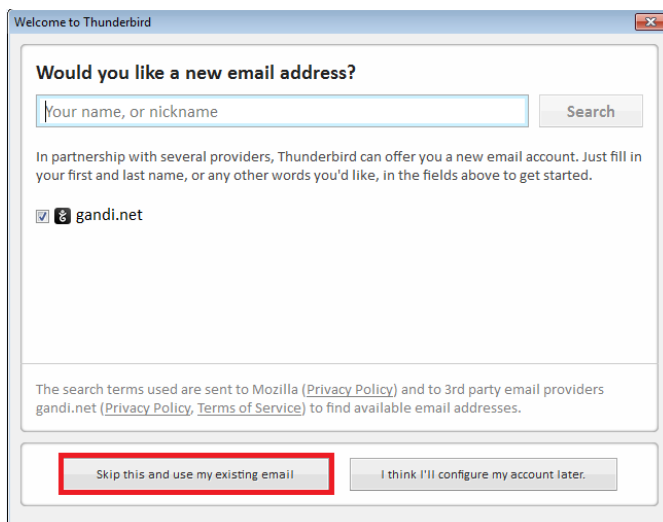
# Thunderbird Email Setup (v.38)

This document provides instructions for setting up the Mozilla Thunderbird Email client. Instructions provided are compatible with Thunderbird v.38.

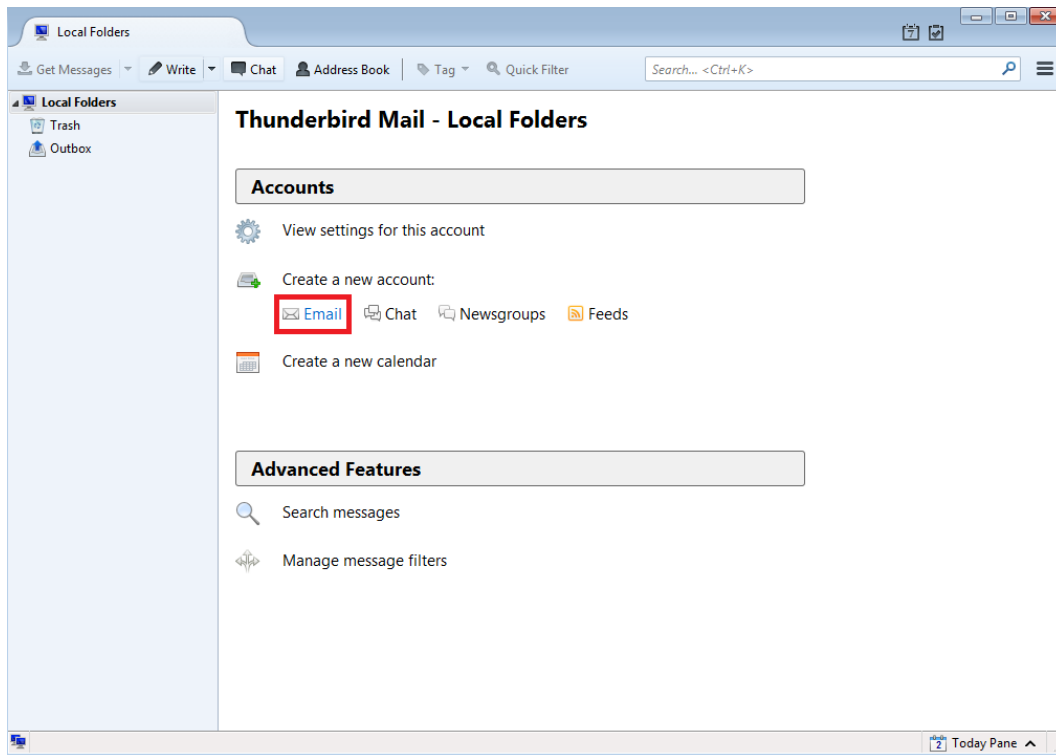
1. Open Thunderbird. You will see the following screen upon initially launching the program.



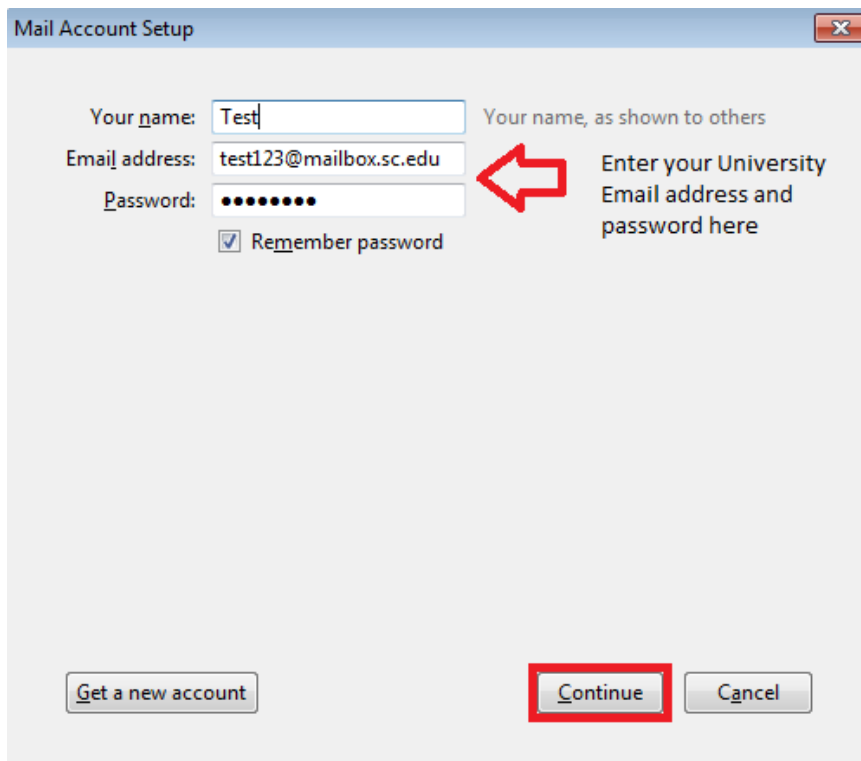
2. Click "Skip for Now".



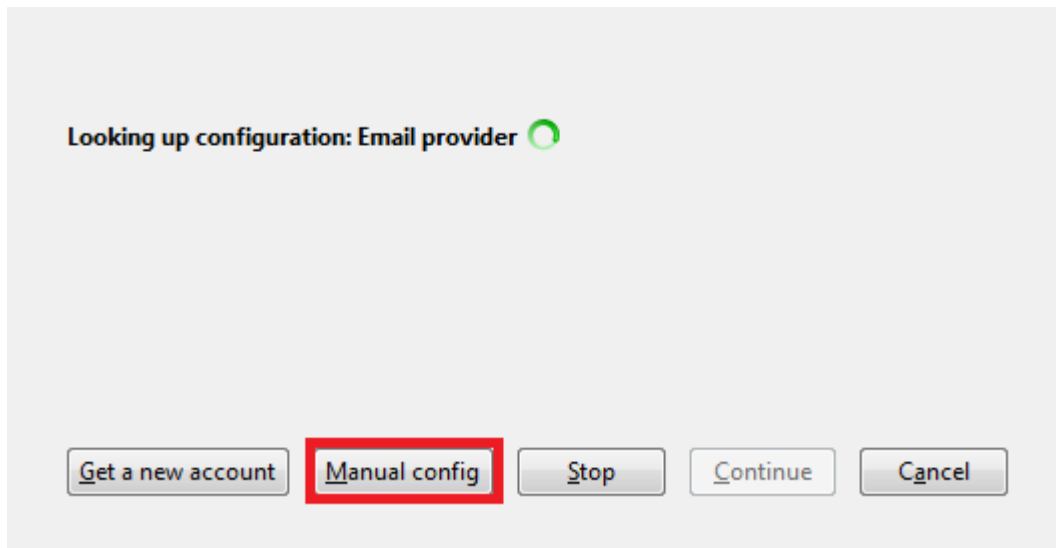
3. Click the Email option from "Create a New Email account".



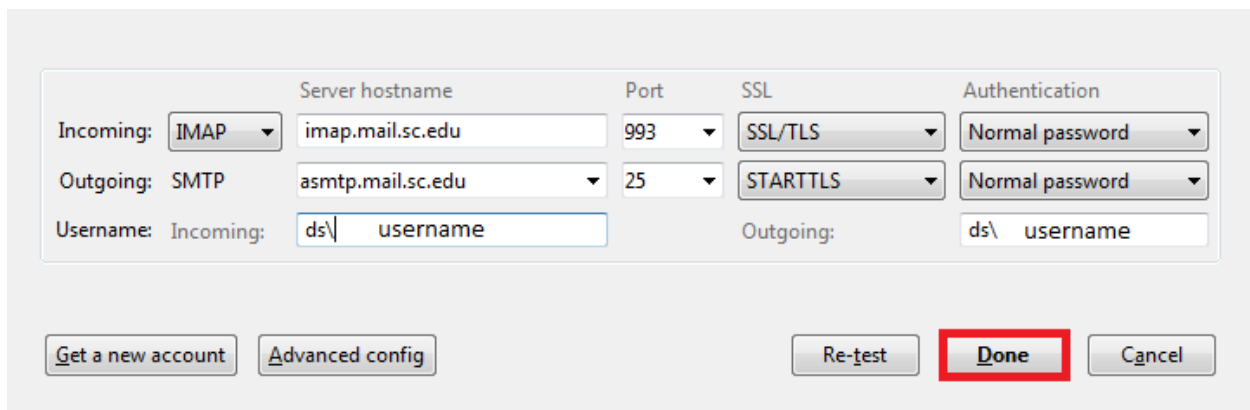
4. The Mail Account Setup screen will appear. Enter your information, then click "Continue".



5. You may see the following, or Thunderbird will be unable to connect. Click "Manual Setup".



6. Enter the settings as they appear below. Note: Enter your network username after ds\.

A screenshot of the email configuration settings dialog box. It includes fields for Incoming (IMAP) and Outgoing (SMTP) server hostnames (imap.mail.sc.edu and smtp.mail.sc.edu), ports (993 and 25), SSL/TLS and STARTTLS options, and authentication (Normal password). The Username field is split into Incoming (ds\ username) and Outgoing (ds\ username). At the bottom, there are buttons for "Get a new account", "Advanced config", "Re-test", "Done" (highlighted with a red box), and "Cancel".

7. Click Done. Your account should now be set up, and ready for use.

*Last Updated: 9/1/2015*

*For further assistance, contact the UTS Service Desk at [\(803\) 777-1800](tel:8037771800) between 8 A.M. - 6 P.M., Monday-Friday, or visit the [Self Service Portal](#).*



